

The Arctic - Beyond the Inhabited World | Le Commandant Charcot

Trip Code
ACPOBTIW
Departure



Introduction

This voyage explores the High Arctic of Greenland at a time when spring begins to open pathways through the pack ice, allowing access to remote regions normally unreachable. You will spend time in Kullorsuaq and Siorapaluk which will allow you to meet some of the world's northernmost communities, with opportunities to observe traditional skills and learn about life in isolated Arctic settlements. As the ship enters the Nares Strait and approaches the North Water Polynya, you may witness extensive sea ice, drifting bergs and wildlife that rely on this unique ecosystem.

A highlight of this expedition is the board range of included optional activities co designed with SEDNA, which includes dog sled excursions, glacier hikes, kayaking, drysuit snorkelling, overnight experiences in Inuit tents, and expedition camps. Navigation is flexible to respect ice conditions and AECO guidelines, and onboard experts including members of The Explorers Club support learning through lectures and field interpretation. Onboard presentations and guidance from polar specialists enhance understanding of the region's ecology, culture and exploration history.

This expedition is in Partnership with:

SEDNA Exploration

“Putting humans and science, instead of the exploit, at the heart of exploration”, such is the promise of the polar experts and consultants at SEDNA. Building on the 30-year experience of its founder Nicolas Dubreuil, a French explorer specialised in the polar environment, SEDNA stands out for its vast expertise in the polar areas acquired among the indigenous communities, and for its special relationships with the scientific world.

Driven by its profound respect for the local populations, the company collaborates closely with them to design custom expeditions that simultaneously honour the environment and the inspiring personalities of these distant regions.

The Arctic - Beyond the Inhabited World | Le Commandant Charcot

Trip Code

ACPOBTIW

Departure

16/04/2027

Duration

13 Days

and

Locations

Greenland

The Explorers Club

The Explorers Club was founded in New York City in 1904 by a group of the world's leading explorers of the time. It is a multidisciplinary, not-for-profit organization dedicated to scientific exploration of land, sea, air, and space. It supports science research and education and has over 3,750 members around the world. In its history, the Club's members have been responsible for an illustrious series of famous firsts: first to the North Pole, first to the South Pole, first to the summit of Mount Everest, first to the deepest point in the ocean, first to the surface of the Moon. Explorers linked to the greatest discoveries, such as Neil Armstrong, Jane Goodall, Edmund Hillary, and Roald Amundsen, are among its eminent members.

The alliance with The Explorers Club offers a truly unique experience of research and exploration. On these departures, our ship will host an esteemed member of The Explorers Club as an onboard speaker along with Explorers Club Science Grantees on select itineraries to enrich your voyage and support scientific discovery. Enjoy tales of exploration, learn about scientific research, and attend insightful lectures, all providing deeper context for your surroundings and journey.

Itinerary

DAY 1: Arrive Nuuk & Embarkation

When Erik Le Rouge, the exiled Norse chief, landed on the coast of Nuuk, he found a fertile and welcoming land dotted with fjords. He settled there with a group of his former countrymen, and the Norse remained the principal inhabitants until, over a period of 500 years, their population declined and gave way to the Inuit. Nuuk is situated at the mouth of one of the largest networks of fjords in the world, where the waters never freeze. The town spreads gently out towards the Davis Strait and enjoys an historic center that is particularly rich in national heritage. The vivid reds, blues, greens and yellows of the houses are a lively contrast to the somber waters of Greenland and serve to lift the spirits of the locals during the Winter months.



The Arctic - Beyond the Inhabited World | Le Commandant Charcot

Trip Code

ACPOBTIW

Departure

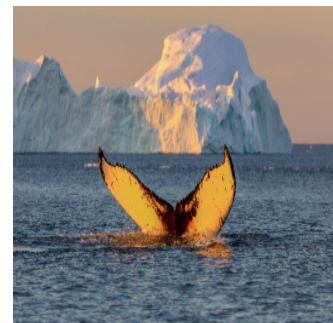
16/04/2027

DAY 2: At Sea - Day 2 & 3

Duration

13 Days

Spend exceptional moments sailing aboard Le Commandant Charcot, the world's first luxury polar exploration vessel and the first PC2-class polar cruise ship capable of sailing into the very heart of the ice, on seas and oceans which the frozen conditions render inaccessible to ordinary ships. Le Commandant Charcot is fitted with oceanographic and scientific equipment selected by a committee of experts. Take advantage of the on-board lectures and opportunities for discussion with these specialists to learn more about the poles. Participate in furthering scientific research and discover together what these fascinating destinations have yet to reveal to us.



DAY 4: Kullorsuaq - Day 4 & 5

Well beyond the Arctic Circle, in the majestic landscapes of Greenland's Northwest, you will find the village of Kullorsuaq, the last bastion of Greenland's traditional hunters. Here is where you will find Greenland's true character... Vast mineral expanses, sumptuous mountains, impressive glaciers and, above all, the local population which still lives off fishing and seal or bear hunting. Hospitality and respect for nature are essential elements in the daily lives of these men, who live an austere life. When we drop anchor in this remote part of the world, set off to discover these friendly people who are also talented craftsmen, deftly sewing the furs and skins of marine mammals. This will be a unique and authentic experience.



The Arctic - Beyond the Inhabited World | Le Commandant Charcot

Trip Code

ACPOBTIW

Departure

16/04/2027 - Baffin Bay Exploration

Duration

13 Days

In the icy waters of Baffin Bay, you will sail

into the heart of the scattered sea floe. You

will be captivated by icebergs in dreamlike

shapes as your ship takes you into the ice of

the Far North. Everything comes in shades

of white here and, if you watch closely, you

may get a glimpse of the lord of this

kingdom, the polar bear. This fascinating

animal finds its food in the heart of the ice,

so this is where you have more chances of

spotting it. The polar light gives a shine to

the ice floe that you sail along as you

explore Baffin Bay, leaving you with

memories of unforgettable moments.



DAY 7: Siorapaluk Region

In the heart of the Arctic, nestling at the

entrance to the Robertson fjord, this region

shelters Siorapaluk, the world's

northernmost hamlet, home to a few dozen

souls, where you will be immersed in

secular Inuit traditions. In this extreme

location, located above 77° N, hunting and

community life set the pace of the polar

year. You will set off to encounter this

ancestral community and enjoy a cultural

experience focused on daily life: discovering

traditional hunting and fishing techniques,

taking dog sled rides and going on polar

hikes.



The Arctic - Beyond the Inhabited World | Le Commandant Charcot

Trip Code

ACPOBTIW

Departure

16/04/2027

Duration

13 Days

A natural waterway separating

locations between northern Greenland from Canada, the

Nares Strait runs for several hundred

kilometres between the Arctic ocean and

Baffin Bay. Sailing at the entrance to this

endless white environment, rarely used by

ships in this season, you will discover little-

known panoramas and fully experience the

extreme isolation of the Far North. In this

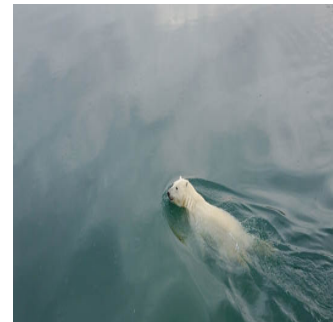
icy desert where absolute silence reigns,

only disturbed by the mysterious cracking of

the ice floe, keep your eyes peeled! You may

get a glimpse of the Lord of the Arctic, the

polar bear.



DAY 9: Exploring the Northern Polynya

Nestling between northwestern Greenland and Ellesmere Island (Canada),

Pikialasorsuaq - 'the place that never

freezes' - is the largest polynya in the

Arctic. This area of open water remains free

of ice even in the depths of winter, playing a

veritable role as an oasis in the heart of the

ice floe. A source of life and a strategic

hunting ground for Inuit societies for

thousands of years, the polynya shelters an

exceptional ecosystem in which life

develops quickly, nourished by the light. In

the heart of this rich yet fragile Arctic

sanctuary, you will perhaps be lucky enough

to observe some of the emblematic polar

fauna: narwhals and belugas, seals,

walruses and seabirds...and, maybe, a polar

bear!



The Arctic - Beyond the Inhabited World | Le Commandant Charcot

Trip Code

ACPOBTIW

Departure

16/04/2027 Baffin Bay Exploration

Duration

13 Days

In the icy waters of Baffin Bay, you will sail

into the heart of the scattered sea floe. You

will be captivated by icebergs in dreamlike

shapes as your ship takes you into the ice of

the Far North. Everything comes in shades

of white here and, if you watch closely, you

may get a glimpse of the lord of this

kingdom, the polar bear. This fascinating

animal finds its food in the heart of the ice,

so this is where you have more chances of

spotting it. The polar light gives a shine to

the ice floe that you sail along as you

explore Baffin Bay, leaving you with

memories of unforgettable moments.



DAY 13: Disembarkation in Nuuk

When Erik Le Rouge, the exiled Norse chief,

landed on the coast of Nuuk, he found a

fertile and welcoming land dotted with

fjords. He settled there with a group of his

former countrymen, and the Norse

remained the principal inhabitants until,

over a period of 500 years, their population

declined and gave way to the Inuit. Nuuk is

situated at the mouth of one of the largest

networks of fjords in the world, where the

waters never freeze. The town spreads

gently out towards the Davis Strait and

enjoys an historic center that is particularly

rich in national heritage. The vivid reds,

blues, greens and yellows of the houses are

a lively contrast to the somber waters of

Greenland and serve to lift the spirits of the

locals during the Winter months. *Please

note: Cruise itinerary is subject to change

depending on weather conditions, ice


conditions and other factors.



Inclusions & Details

Accommodation Cabin on board a ship

The Arctic - Beyond the Inhabited World | Le Commandant Charcot

Trip Code	
ACPOBTIW	
Departure	
16/04/2027	
Duration	
13 Days	
Locations	
Greenland	
	
Inclusions	<p>INCLUSIONS</p> <ul style="list-style-type: none">Cabin accommodation whilst on board Le Commandant CharcotReturn Charter Flights between Paris and Nuuk on Embarkation and Disembarkation DayReturn Group transfers between airport and pierMeet & greet at the airport by our local English-speaking representative.All meals whilst on board including snacksOpen Bar (excluding premium brands)Room Service & Mini Bar (excluding Champagne)Scheduled landings and excursions, conditions permittingGuiding and lectures by expedition teamComplimentary Polar expedition jacket (yours to keep)Free use of rubber boots for shore excursionsAll port taxesComprehensive pre and post voyage informational materialFree WIFI <p>EXCLUSIONS</p> <ul style="list-style-type: none">Airfares other than specifiedPre and post land arrangements and accommodationVisa and reciprocity fees (if applicable)Travel InsurancePersonal expenses such as laundryGratuities for the crew (recommend US\$15 per person per day)Optional Activities whilst on-board
Difficulty Rating	2 (light adventure)
Single Surcharge	Available upon request. A supplement surcharge may apply and is subject to availability. Please contact us for more information.

The Arctic - Beyond the Inhabited World | Le Commandant Charcot

Trip Code
ACPOBTIW
Departure
16/04/2027
Duration
13 Days
Locations
Greenland

In rare and unforeseen situations, an operator may apply a fuel surcharge after your booking has been confirmed and paid. This is outside our control and uncommon, but transparency with our travelers is important to us.

*

Prices are based on per person, twin share.

Prices are correct at time of publishing but are subject to change at any time.

Itinerary is subject to change depending on weather and ice conditions.

*

SEDNA Activities

Enjoy unique and exclusive experiences in the heart of the Far North curated by the polar expertise consultancy SEDNA and its founder, Nicolas Dubreuil, French explorer specialised in the polar environment and a Kullorsuaq inhabitant.

Among the activities open to all (advance booking required) :

Camp Qilalukat: Demonstration of traditional Greenlandic kayaking practices and snorkeling activities around a marine hunting camp. Introduction to kayaking, harpoon use, and snorkeling.

This activity requires a dog sled ride of more than 30 minutes from the ship. Please note that for snorkeling, an ECG (electrocardiogram) provided by your general practitioner will be required.

Camp Siku ("Ice"): Life on the ice (ice fishing and cultural sharing with fishermen) and discovery of traditional Greenlandic life on the pack ice. Experience halibut and cod fishing, seal observation, and explanations of Greenlandic techniques. Start your activity directly from the ship and travel by dog sled to various observation points with your Greenlandic guide and musher.

Camp Explorer : Introduction to autonomous polar expedition travel techniques using skis and pulkas, on the pack ice and in the mountains. After reaching the Narsuarq Peninsula by dog sled or snowmobile (approximately 20 minutes), enjoy a ski excursion with a pulka (approximately 2 hours) and take in breathtaking views over the ice desert.

Science Activities (science in service of the poles): After a dog sled or snowmobile ride of approximately 20 minutes, introduction to and participation in a scientific research camp.

Greenlandic Ice Fishing (Aalisartoq): What better place than the Arctic's frozen regions to practice ice fishing? Assisted by a local guide, you will search for the ideal spot on the pack ice or frozen lakes to drill your hole and attempt to catch halibut using an ancestral method. This activity takes place near your ship.

Contemplative Dog Sled Experience: Aboard a qamutit, a traditional Greenlandic dog sled rooted in a 6,000-year-old tradition, enjoy an unforgettable ride through vast and pristine landscapes. A gentle and authentic polar immersion inviting contemplation.

Among the optional paid activities:

One night in a modern tent (capacity 2 people) on the pack ice near Camp Explorer, including an expedition-style meal in tribute to Arctic pioneers. After reaching the Narsuarq Peninsula by dog sled or snowmobile (approximately 20 minutes), enjoy skiing with a pulka (approximately 2 hours) and spend the night in a modern tent.

This activity requires good skiing ability and excellent physical condition (night temperatures may drop to -30°C).

One night in a traditional tent (capacity 4 people) on the pack ice near Camp Qilalukat. Share a Greenlandic meal and enjoy convivial moments. Practice traditional Greenlandic kayaking and snorkeling activities around a marine hunting camp.

This activity requires a dog sled ride from the ship. For snorkeling, an ECG provided by your general practitioner will be required. Excellent physical health is necessary (night temperatures may drop to -30°C).

One night in the village of Kullorsuaq (single bed) inside a Greenlandic home with a local Greenlandic meal. After visiting the village, you will spend part of the evening with residents and enjoy a unique moment of conviviality through authentic exchanges.

This activity may require travel by snowmobile or dog sled from the ship. The village visit involves walking on sloped and icy terrain.

One night in a Science Camp accompanied by passionate scientists, where you will take part in engaging discussions on marine biology, glaciology, and climatology. Spend the night in a modern tent with an expedition-style meal for full immersion on the pack ice. This activity requires approximately 20 minutes of travel by dog sled or snowmobile from the ship and excellent physical health (night temperatures may drop to -30°C).

*Activities subject to weather and ice conditions. The Captain and the Expedition Leader will decide from day to day on their feasibility depending on these conditions.

Notes

The Arctic - Beyond the Inhabited World | Le Commandant Charcot

Trip Code
ACPOBTIW
Departure
16/04/2027
Price dependent upon Departure date, fuel surcharges, cabin category, currency fluctuations, seasonality and availability.
Duration
13 Days
Locations
Greenland
