

The Arctic - Expedition to the Edge Ice Sheet 2027 | L'Austral

Trip Code
ACPOEISH
Departure



Introduction

This Arctic voyage begins in Reykjavík before sailing west toward the wild coastline of Greenland, where dramatic fjords, remote settlements and immense ice landscapes shape the journey. After a day at sea to settle into ship life, the adventure begins along Greenland's east coast with visits to places like Tasiilaq and scenic cruising through fjords filled with drifting icebergs and towering mountain backdrops.

As the voyage continues south and then north along the coast, each stop offers a different glimpse of life in the Arctic. Wander small villages with colourful houses, visit Viking ruins set among green valleys and sail through narrow waterways framed by glaciers and waterfalls. Further north, the scale of Greenland becomes even more striking, with iceberg filled bays, powerful glaciers and opportunities to spot whales and Arctic wildlife. The journey finishes in Kangerlussuaq, leaving you with a vivid sense of the Far North's raw beauty, quiet communities and ever changing polar landscapes.

Itinerary

The Arctic - Expedition to the Edge Ice Sheet 2027 | L'Austral

Trip Code

ACPOEISH

Departure

30/07/2027

DAY 1: Arrival & Embarkation from Reykjavik

Destination

14 Days

Locations: Capital stretches along the edge of

Greenland in the west of the country.

Perlan, the “Pearl of Reykjavík”, a museum

located on 'Oskjuhlíð hill, offers a

panoramic view of the lush, green

landscapes. A little further, one can easily

spot the signpost showing the way to the

evangelical Hallgrímskirkja church, and to

the historical centre where one can stroll

along the Skólavörðustígur and the

Laugavegur, two lively streets with

charming small shops. For some relaxation

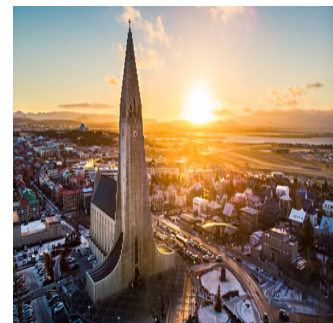
just outside of the city, visitors have the

opportunity to visit the Reykjanes peninsula

and its famous thermal lagoons of the Blue

Lagoon. Embarkation from 4:00 pm to 5:00

pm and departure at 12:00 am.



DAY 3: At Sea

During your journey at sea, make the most of the many services and activities on board.

Treat yourself to a moment of relaxation in the spa or stay in shape in the fitness

centre. Depending on the season, let

yourself be tempted by the swimming pool

or a spot of sunbathing. This journey

without a port of call will also be an

opportunity to enjoy the conferences or

shows proposed on board, depending on the

activities offered, or to do some shopping in

the boutique or to meet the PONANT

photographers in their dedicated space. As

for lovers of the open sea, they will be able

to visit the ship's upper deck to admire the

spectacle of the waves and perhaps be lucky

enough to observe marine species. A truly

enchanted interlude, combining comfort,

rest and entertainment.



The Arctic - Expedition to the Edge Ice Sheet 2027 | L'Austral

Trip Code

ACPOEISH

Departure

30/07/2027
DAY 4 - Tasiilaq & Sermilik Fjord

Duration

14 Days

Location Tasiilaq, on Ammassalik Island, follow in

Greenland the wake of Captain Jean-Baptiste Charcot's

Greenland famous ship, the Pourquoi Pas ?, which set

off with its crew in 1935 to discover this

small island of primitive and wild beauty

that remained unexplored until the end of

the 19th century. Along with

Ittoqqortoormiit, a village with 500

inhabitants located at the entrance of the

Scoresby Sound, the village of Tasiilaq and

its surroundings, 800 kilometres (500 miles)

further north, are the only inhabited areas

on the east coast of Greenland. The name of

this island is a reference to the capelin, a

small flamboyant silver-coloured fish whose

presence in the thousands announces to

inhabitants the return of spring. A

surprising discovery in a spectacular

setting. You will be captivated by the

spectacular scenery of the Sermilik Fjord,

the largest in the south-east of Greenland.

To the north, above the glacial valleys, the

Schweitzerland Alps and their peaks that

rise to an altitude of more than 3,000

metres (10,000 feet) stretch out in the

distance, while in the south, where it opens

onto the Irminger Sea, heavy erosion has

carved the landscape. Three main glaciers

calve a multitude of dazzling icebergs that

drift serenely along the indigo waters of this

majestic fjord. It owes its name to the Inuit

word Sermilik, which generally refers to a

fjord into which a glacier flows. It was

mapped in 1884 by the Danish explorer

Gustav Holm and his crew, while they

wintered in the Ammassalik region.



The Arctic - Expedition to the Edge Ice Sheet 2027 | L'Austral

Trip Code

ACPOEISH

Departure

30/07/2027

Duration

14 Days

Discover Skjoldungen Island on the south-east coast of Greenland. This uninhabited island boasts magnificent landscapes that are sure to dazzle you. The island is surrounded by a stunning fjord, a distinctive feature of which is its double entrance: it forms a bend before joining the sea on the other side.

Mountains, glacial valleys, rocky outcrops, tundra and willow forests make up the beautiful scenery which you will be able to admire more closely when you land here. At this port of call, surrounded by wild and pristine nature, it is quite common to see bearded seals, orcas, but also birds such as the common redpoll, the northern wheatear, or the common raven.



DAY 6: Prins Christian Sund

Your ship glides silently towards the Greenland coast, in a setting punctuated by pointed peaks and majestic glaciers... You are on the verge of crossing the Prins Christian Sund, a narrow channel that stretches out and zigzags over some one hundred kilometres between Greenland's south-east and south-west. Fall under the spell of the primitive beauty of these unique landscapes, including rocky cliffs and waterfalls that are fed by the ice sheet and plunge into the icy waters. Here, bearded seals love to lie on the floating ice to soak up the sunshine.



The Arctic - Expedition to the Edge Ice Sheet 2027 | L'Austral

Trip Code

ACPOEISH

Departure

30/07/2027

DAY 7: Hvalsø & Igaliku

Duration

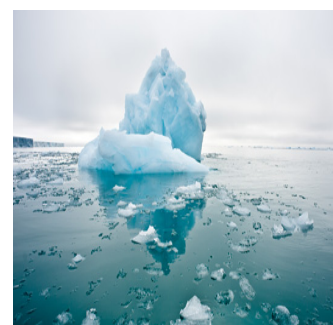
14 Days

Around you, a grassy meadow filled with flowers stretches out, dotted with imposing granite rocks. A few semi-wild sheep and horses greet you; they are the only inhabitants of this place surrounded by beautiful mountains. You are in Hvalsø, in the heart of the fertile lands in Greenland's south. During the 10th century, this site was colonised by the Vikings, who established a large community here. When your ship calls at these lands brimming with history, you will see the ruins of a church whose remains are still very well preserved. It was most likely built in the 14th century. It has lost its timber roof, but its four stone walls continue to stand proudly as a moving relic of a long-gone era. Nestling on the southern tip of Greenland, Igaliku offers a peaceful panorama, dominated by high snow-capped mountains and vibrant valleys of flowers on fine days. Home to the first Viking agricultural settlements, this bucolic village houses the remains of the Garðar religious site, a UNESCO World Heritage Site.



DAY 8: Ikka Fjord

As you sail through the majestic Ikka Fjord in south-west Greenland, you will discover over 10,000 years of underwater geology, for mysterious columns up to 20 metres high, formed several millennia ago, rise up from the seabed. Their material, ikaite, gives the fjord its name. Truly magical! You glide over calm, clear waters amidst breathtaking mountains in the endlessly wild, huge area of Greenland.



The Arctic - Expedition to the Edge Ice Sheet 2027 | L'Austral

Trip Code

ACPOEISH

Departure

30/07/2027

Duration

14 Days

When Erik Le Rouge, the exiled Norse chief,

landed on the coast of Nuuk, he found a

Greenland welcoming land dotted with

fjords. He settled there with a group of his

former countrymen, and the Norse

remained the principal inhabitants until,

over a period of 500 years, their population

declined and gave way to the Inuit. Nuuk is

situated at the mouth of one of the largest

networks of fjords in the world, where the

waters never freeze. The town spreads

gently out towards the Davis Strait and

enjoys an historic center that is particularly

rich in national heritage. The vivid reds,

blues, greens and yellows of the houses are

a lively contrast to the somber waters of

Greenland and serve to lift the spirits of the

locals during the Winter months.



DAY 10: Sisimiut

During your cruise, we invite you to

discover Sisimiut, founded in 1756 and the

second largest town in Greenland. This

small town is typical of Greenland, boasting

bewitching panoramas: here and there,

colourful stilt houses dot the undulating

landscape, and the small fishing port stands

as the gateway to an icy realm. As for the

town centre, it is home to a number of

historic buildings, a small church and a

museum which retraces the history of the

Inuit people, as well as many craft shops.

When your ship drops anchor here, you will

set out to meet the locals in a typically

arctic atmosphere.



The Arctic - Expedition to the Edge Ice Sheet 2027 | L'Austral

Trip Code

ACPOEISH

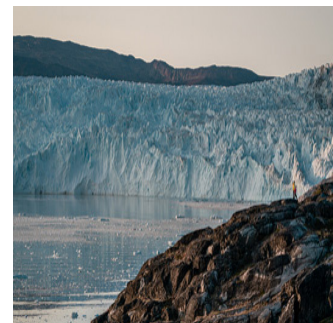
Departure

30/07/2027

Duration

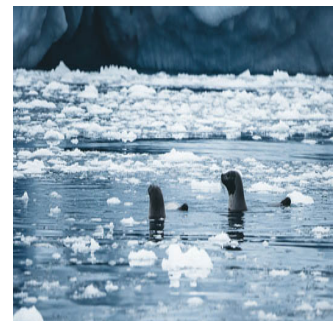
14 Days

The most beautiful place in the Arctic' is how Paul-Émile Victor described Greenland, Greenland's great icebergs and of towering ice formations calved by the giant glaciers of the polar ice cap. The Eqi Glacier is one of the region's most impressive sights. Here, the silence is broken only by the roaring and cracking of the ice. It is impossible to know if one is shivering from cold or from the sheer thrill of being here... Imagine the vast outline of a glacier, its translucent crystals glowing with an ice-blue fire in the sunlight. Paul-Émile Victor's shelter cannot be overlooked; it was from here that the French Polar Expeditions' anthropological and geographic explorations set off in the 1950s.



DAY 12: Disko Bay

To the east of Baffin Bay, discover Disko Bay, scattered with countless icebergs produced by the Ilulissat Icefjord, a UNESCO World Heritage Site. From your ship, admire the majestic ballet of these ice giants as they slowly drift across the dark waters. This site is a natural marvel of Greenland, and is also renowned as an observation point for the region's many humpback whales. The encounters with wild fauna and stunning landscapes in the heart of this spectacular and fragile nature will be pure moments of wonder for you.



The Arctic - Expedition to the Edge Ice Sheet 2027 | L'Austral

Trip Code

ACPOEISH

Departure

30/07/2027

Duration

14 Days

Location a few kilometres away from the

Arctic Circle, the Nooralaq peninsula

Greenland features raw and untamed beauty. Nature

reigns supreme here, with the tundra

stretching as far as the eye can see, decked

out in various forms of flora and inhabited

by Greenland's emblematic fauna — snow

buntings, common ravens, reindeer, musk

oxen, and the discreet Arctic fox. The

heights of Nooralaq afford sublime

panoramas over the Itteleq fjord, whose

water reflects the moving skies of the Far

North.



DAY 14: Disembarkation in Kangerlussuaq

From 1941 to 1992, the town of

Kangerlussuaq in Greenland was home to

an American military base. Nowadays,

thanks to its international airport, it has

become a transit point for travellers seeking

adventure in the Far North. Located to the

north of the Arctic Circle, this town is the

starting point of magnificent discoveries

surrounded by unspoiled nature. Indeed,

just a few dozen kilometres from there it is

possible to get close to the Greenland ice

sheet, the largest body of ice in the

Northern Hemisphere. From

Kangerlussuaq, admire also the superb

landscapes of tundra in autumnal colours,

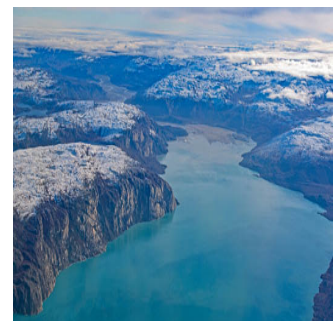
where Arctic hares, musk oxen, Arctic foxes,

reindeer, falcons and eagles live. *Please

note: Cruise itinerary is subject to change

depending on weather conditions, ice

conditions and other factors.



Inclusions & Details

Accommodation Cabin on board a ship

The Arctic - Expedition to the Edge Ice Sheet 2027 | L'Austral

Trip Code
ACPOEISH
Departure
30/07/2027
Duration
14 Days
Locations
Greenland


INCLUSIONS

Cabin accommodation on board ship
All meals whilst on board
Charter flight Kangerlussuaq/Paris on Disembarkation Day
Transfers from vessel to airport
Guiding and lectures by experienced expedition crew
Unlimited Open bar & included Mini bar
Free WiFi on board

Inclusions

EXCLUSIONS

International flights
Pre and post land arrangements and accommodation in Paris
Any optional activities not mentioned in itinerary
Visa and reciprocity fees (if applicable)
Travel Insurance
Any Personal Expenses
Optional tipping/gratuities

Difficulty Rating

2 (Light Adventure)

Single Surcharge

Available upon request, a supplement surcharge applies and is subject to availability. Please [contact us](#) for more information.

Prices are based on per person, and vary from twin share cabins.

Prices are correct at time of publishing but are subject to change at any time.

Notes

All entrance fees are subject to change without prior notice.

Please note this itinerary is subject to change depending on weather and ice conditions.*

Price Dependent upon

Departure date, fuel surcharges, cabin category, currency fluctuations, seasonality and availability.

Sustainability