

## **The Arctic** - Four Arctic Islands | Ocean Albatros

Trip Code  
ACPLA4AI  
Departure



### Introduction

This trip offers the ideal opportunity to take in the beauty of the Arctic's late summer. In some of the planet's northernmost islands, you can anticipate stunning landscapes.

Leave Svalbard behind as you set course for Jan Mayen, a remote island dominated by Mt. Beerenburg, the world's northernmost volcano. Here, fulmars, kittiwakes, and gulls flock to the dramatic black volcanic cliffs. Ocean Albatros will continue toward East Greenland, stopping at the welcoming settlement of Ittoqqortoormiit and then venturing into the largest fjord system on Earth—Scoresbysund! Here, vibrant tundra, immense glaciers, and towering mountains rise from the icy waters, making this one of the most breathtaking destinations in the Arctic.

The journey concludes in Reykjavik, Iceland's lively capital, after crossing the Denmark Strait. This is the perfect gateway to explore Iceland, the land of fire and ice.

### Itinerary

## The Arctic - Four Arctic Islands | Ocean Albatros

Trip Code

ACPLA4AI

Departure

29/08/2027

DAY 1: Arrive Longyearbyen & Embarkation

Duration

13 Days

Arrive in Longyearbyen, Svalbard—the

most town on Earth. Despite its

remote Arctic location, Longyearbyen offers

warm Nordic hospitality. Upon arrival,

you're greeted by crisp polar air, dramatic

mountain views, and a polar bear warning

sign reminding visitors of their wild new

location. Your expedition ship Ocean

Albatros awaits you in the harbor; toast

your departure from civilization as you sail

into the Arctic wilderness, on course for

adventure!



### DAY 2: Kongsfjorden Area

During the Arctic “night,” we sail past Prins

Karls Forland to the stunning Kongsfjord,

framed by glaciers and the dramatic Three

Crowns mountains. The first stop is Ny-

Ålesund, Earth’s northernmost settlement,

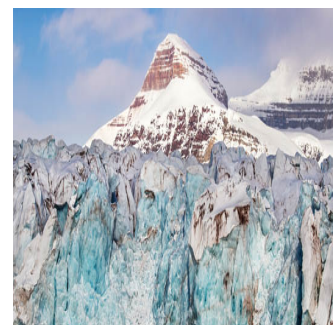
known for its scientific stations and historic

role as a base for legendary polar explorers

like Amundsen and Nansen. This remote

outpost continues to support vital research

amid its breathtaking surroundings.



### DAY 3: Expedition Northwest Spitzbergen

Northwest Svalbard, a National Park since

1973, preserves a rich history of early Arctic

exploration and whaling. First visited by

William Barents in 1596, the area became a

hub for Dutch and English whalers, whose

haunting remnants, such as the blubber

ovens and graves of young sailors at

Smeerenburg, remain visible. Now heavily

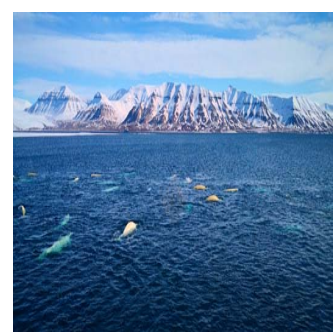
protected, the region has been reclaimed by

nature, hosting Arctic flowers, seabirds,

walrus, and polar bears, making it once

again a pristine wilderness and haven for

wildlife.



## The Arctic - Four Arctic Islands | Ocean Albatros

Trip Code

ACPLA4AI

Departure

29/08/2027

DAY 4: Expedition South Svalbard

Duration

13 Days

On our final day on Svalbard, our expedition

enters the greener, warmer fjords of

Spitsbergen and Fronsund, nourished by

Atlantic currents. These fertile valleys

support reindeer, Arctic foxes, nesting

seabirds, and drifting icebergs from nearby

glaciers. Rich in wildlife and history, the

area offers highlights like Alkhjornet's bird

cliffs and the historic sites of Calypsobyen

and Bamsebu, making it one of Svalbard's

most diverse and captivating regions.



DAY 5: At Sea, en Route to Jan Mayen - Day

5 & 6

Departing Svalbard, Ocean Albatros heads

southwest across the Greenland Sea

towards Jan Mayen. Cold currents drifting

down from the Arctic Ocean mix with the

last gasp of the Gulf Stream, creating vast

biological productivity. During sea days,

guests can enjoy fascinating lectures,

indulgent spa treatments, or simply relax

and watch seabirds from the ship's hot tubs.



DAY 7: Jan Mayen

The active volcanic island of Jan Mayen is

on the MidAtlantic Ridge, the 'spine' of the

Atlantic Ocean. This enigmatic and isolated

island is the only active volcano in Norway,

and the northernmost active volcano on

Earth. Jan Mayen is inhabited by only

around 18 people, a mixture of scientists

and Norwegian troops. The volcanic origin

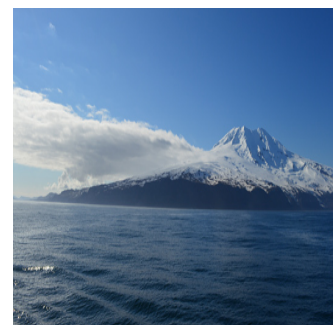
is visible all over with cinder cones, lava

flows, and the Fuji-esque peak of

Beerenberg looming above, while creeping

tundra plants and squabbling seabirds eek

out a living in the rugged cliffs.



## The Arctic - Four Arctic Islands | Ocean Albatros

Trip Code

ACPLA4AI

Departure

29/08/2027

Duration

13 Days

From San Mayen, Ocean Albatros will sail on

towards the coast of the largest island on

Spitzbergen, Greenland & Iceland

Spitzbergen, Greenland & Iceland is

some of the most persistent in the Arctic;

even in midsummer, the coast can be

icebound, creating the perfect habitat for

ice-loving species such as polar bears and

belugas. If we are lucky, we will catch a

glimpse of this vast icy wilderness during

our passage towards Scoresbysund.



### DAY 9: Ittoqqortoormiit

The only settlement in this region,

Ittoqqortoormiit is among the most remote

communities on Earth. While the

establishment of the town by Danish

authorities in 1925 was challenging,

residents continue a subsistence hunting

lifestyle, essential when supply ships arrive

only once or twice per year.

Ittoqqortoormiit is a town with a strong

sense of community and traditional culture,

hosting an excellent museum, a beautiful

traditional church, and locals often welcome

visitors wearing colourful traditional

costumes. Ittoqqortoormiit is the perfect

introduction to the culture and lifestyle of

Greenland.



## The Arctic - Four Arctic Islands | Ocean Albatros

Trip Code

ACPLA4AI

Departure

29/08/2027

Duration

13 Days

Venturing deep into the maze of fjords and

islands that comprises Scoresbysund, it is

easy to see why this region is spoken of with

awe by even experienced explorers! The

exact locations we visit in Scoresbysund will

be dictated by Mother Nature - this far

north, all human activity is subject to wind,

sea and ice conditions. Options include the

Bjørne Islands, a labyrinth of skerries which

trap vast icebergs in their rocky net, the

sweeping basalt mountains of Cape

Brewster, and the abandoned remains of

European and Inuit settlements. Wherever

we visit in the depths of Scoresbysund,

adventure is guaranteed!



### DAY 11: Blosseville Coast

The Ocean Albatros will sail south along

Greenland's Blosseville Coast, a rugged

landscape shaped by volcanic activity

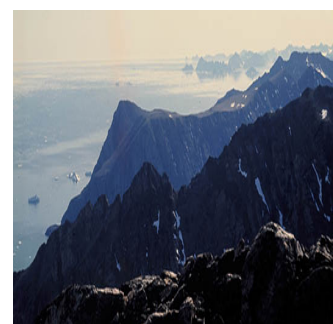
around 50 million years ago. First surveyed

by explorer Ejnar Mikkelsen, this area has

long been navigated by the Inuit. If

conditions allow, we may land in this now-

uninhabited region of breathtaking beauty.



### DAY 12: At Sea

During our time at sea approaching

Reykjavik, relax and reflect on your thrilling

Arctic adventure. Attend final lectures from

the Expedition Team, relive your adventure

at the voyage slideshow, and celebrate your

voyage with new friends at the Captain's

Farewell Cocktail Party.



## The Arctic - Four Arctic Islands | Ocean Albatros

Trip Code

ACPLA4AI

Departure

29/08/2027 Embark in Reykjavik

Duration

13 Days Halkjaskirkja Church towers over

Reykjavik, a vibrant city known for Nordic

Spitsbergen, Greenland & Iceland

epic, unique museums, and excellent

shopping. Such a bustling capital may feel

strange after the remote wilderness of the

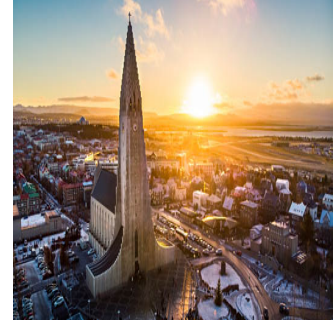
Arctic! After a hearty breakfast, it is time to

bid a fond farewell to the Crew and

Expedition Team and descend the gangway

back to dry land with memories of the

voyage of a lifetime.



### Inclusions & Details

Accommodation Cabin on board a ship

**The Arctic** - Four Arctic Islands | Ocean Albatros

Trip Code  
ACPLA4AI  
Departure  
29/08/2027  
Duration  
13 Days  
Locations  
Spitsbergen, Greenland & Iceland

## INCLUSIONS

Accommodation onboard the Ocean Albatros in booked cabin category  
All meals on the ship (full board): breakfast, lunch, dinner, and snacks  
"Welcome" and "Farewell" cocktail parties  
Complimentary house wine, beer, and soft drinks at dinner (selected labels and brands)  
24-hour access to tea, coffee, and 'Grab and Go' comfort food  
500MB WiFi card for use on your personal devices  
Expedition Parka, yours to keep  
Use of rubber style muck boots, on loan for the duration of your expedition  
English-speaking Expedition Team  
Briefings and educational lectures by the Expedition Team  
All scheduled landings and excursions  
Citizen Science program  
Photography Coach available throughout the voyage  
Participation in the Polar Plunge  
Access to onboard medical clinics  
Access to onboard fitness centres  
All port taxes and landing fees  
Digital Expedition Memento, including a curated selection of photos, videos, expedition log and map, and wildlife list

Inclusions

### INCLUDED ON BALCONY SUITE (A) AND ABOVE

Wine and fruit on arrival  
In-room mini-bar refilled once daily with non-alcoholic beverages  
Complimentary laundry service  
In-room espresso machine

## EXCLUSIONS

**Mandatory Transfer Package:** Flight from Oslo to Longyearbyen, and Group Transfer to the ship at extra cost of USD\$500 per person  
International or internal flights other than specified  
Airport transfers, taxes and excess baggage charges unless specified  
Meals other than those specified in the pre-departure information  
Pre or post cruise travel expenses other than specified  
Visa (if applicable) and passport fees  
Travel insurance (compulsory)  
Fuel surcharge may be applied to all bookings  
Paid adventure options and all personal expenses  
Tobacco, or selected premium beverages  
Miscellaneous extras  
Laundry and communication charges on board, except as listed in inclusions  
Gratuities for Expedition team and crew  
For minors under 16 years of age at time of travel; life jackets, waterproof outer shell jacket, and boots  
For guests who require larger sizing; Waterproof outer shell jacket and rubber boots  
2 (light adventure)  
Available upon request, a supplement surcharge applies and is subject to availability. Please [Contact Us](#) for more information.

Difficulty Rating  
Single Surcharge

**The Arctic** - Four Arctic Islands | Ocean Albatros

Trip Code

ACPLA4AI

Departure

29/08/2027

Duration

13 Days

Locations

Spitsbergen, Greenland & Iceland



Price Dependent upon

Sustainability

Prices are based on per person, and may be based on quad/triple/twin share.

Prices are correct at time of publishing but are subject to change at any time.

Itinerary is subject to change depending on weather and ice conditions.

**Mandatory Transfer Package:** Flights from Oslo to Longyearbyen and Group Transfer between Longyearbyen Airport and the vessel. To be booked 11 months prior departure at additional cost. No Discount applies to Optional Transfer Package

Departure Date, Fuel Surcharges, Cabin Category, Currency Fluctuations, Seasonality & Availability.