

South America - Signature South America

Trip Code
MCCHCSA
Departure



Introduction

Discover the best of South America on this immersive 20-day journey, blending vibrant cities, breath taking natural wonders, and rich cultural heritage. From the lively streets of **Santiago** and **Buenos Aires** to the awe-inspiring **Iguazu Falls** and the iconic **Machu Picchu**, every destination is handpicked for an unforgettable experience. Travel in comfort as you journey through the best the continent has to offer.

This itinerary is also available in [reverse](#), ending in Santiago.

On this all-encompassing personalised itinerary, Chimu Adventures will provide travel logistics for your travel party for the duration of your journey, plus expert guides for all the major sightseeing as per itinerary. Each night you will stay in superior accommodation, handpicked by our experienced team for their creature comforts, convenient locations, and impeccable service.

Itinerary

DAY 1: Arrive in Lima

Lima, the capital of Peru is a bustling metropolis and one of South America's largest cities. Home to a plethora of interesting museums and a foodie's delight, being the 'gastronomical capital of the Americas'.



South America - Signature South America

Trip Code

MCCHCSA

Departure

~~Day 2:~~ Lima Walking Tour

Duration

~~20 Days~~ Your local guide will take you on an

~~excursion~~ half-day tour of Lima's culinary

~~Peru, Chile, Argentina & Brazil~~ and historical highlights, designed by us to

help you get the most out of the city,

starting with a visit to a local market to

sample some local fruit and a scenic stroll

through the city's historic downtown with

some tastings of famous local bites along

the way. Enjoy a stop at the San Francisco

catacombs, a tour of Casa de Aliaga, a

stunning colonial style mansion. End your

tour with a Chilcano or Pisco Sour cocktail -

both are made with the local brandy, Pisco.

(B)



DAY 3: Lima to the Sacred Valley

You will be transferred to the airport for

your onward flight to Cusco, where you will

descend into the Sacred Valley below

Cusco. The Sacred Valley of the Incas is a

region in Peru's Andean highlands which,

along with the nearby town of Cusco and

the ancient city of Machu Picchu, formed

the heart of the Inca Empire. The Sacred

Valley's elevation is 2,800 meters above sea

level, so it's recommended to take it easy

for the afternoon as your body acclimatizes

to the altitude. (B)



South America - Signature South America

Trip Code

MCCHCSA

Departure

Day 4: Sacred Valley Tour

Duration

20 Days' Sacred Valley of the Incas tour,

you will be presented with plenty of photo

opportunities of ancient Inca villages and

ruins, whilst learning about the culture and

beliefs of the Inca people. This tour is the

perfect start to understanding the unique

way of life, farming techniques, and

archaeological design of the Incas. The first

stop is the village of Pisac. Wander the

colourful market stalls before heading uphill

to the famous Pisac ruins, Intihuatana,

Q'allaqasa and Kinchiracay ruins. Enjoy

lunch in the gardens overlooking the Valley

before continuing along the River

Urubamba, to Ollantaytambo, which is

dominated by a giant Inca fortress. (B,L).



DAY 5: Machu Picchu

Today will be one of your highlights in

South America with a visit to Machu Picchu.

A transfer will collect you and transfer you

to Ollantaytambo train station to board a

scenic train and arrive in one of the world's

most famous ruins after the morning fog

and crowds have cleared. A guide will meet

you on arrival and take you directly to the

UNESCO World Heritage Site, where you

will spend the afternoon marvelling at the

stunning display of ancient architecture and

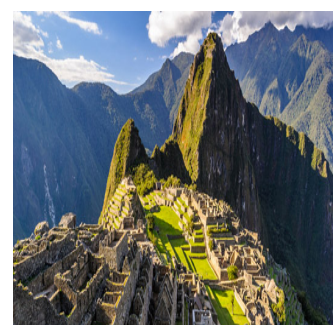
incredible surroundings. located 2,430

metres above sea level, your guide will

explain the 15th-century Inca site before

taking you to your hotel for the night in the

local village of Aguas Calientes. (B)



South America - Signature South America

Trip Code

MCCHCSA

Departure

~~Daily~~ 6: Machu Picchu to Cusco

Duration

~~20 Days~~ your journey back to Cusco by

~~boarding~~ a return train to Ollantaytambo. A

~~transfer~~ will be waiting as you arrive back

to Ollantaytambo station to continue

onwards to Cusco. En route, you will visit

the Maras Salt ponds, believed to pre-date

the Inca period. These shallow pools, dug

into the mountainside, are filled with salt

water from an underground spring from an

adjacent mountain. Continue to Moray,

which boasts an impressive Inca ruin of

giant circular terraces that are believed to

have been used for agricultural

experimentation. You will then be dropped

to your hotel in Cusco, set at an altitude of

3,400 metres in the Peruvian Andes. (B)



DAY 7: Cusco City Tour

Join our Chimu Adventures exclusive day

tour and explore the city's fascinating

history. This specially designed tour has

been perfected to show you the best of this

incredible city without the crowds and other

tourists. Learn about this city from the Inca

times to colonial rule to the present day,

winding through narrow cobble-stoned

streets and visiting the market of Cusco.

Visit the fascinating Koricancha Temple of

the Sun, Cusco's Plaza de Armas and

Cathedral, built on the ruins of an Inca

Palace and finish up at Sacsayhuaman, a

former Incan fortress perched atop the hill

above Cusco. (B)



South America - Signature South America

Trip Code

MCCHCSA

Departure

Day 8: Cusco Free Day

Duration

20 Days at leisure, allowing you to spend

time wandering the cobble-stoned streets of

Peru, Chile, Argentina & Brazil

the ancient Inca capital. With treasures

around every corner, Cusco is a wonderful

city to explore on foot. Vibrant markets and

stores give the traveller a plethora of

shopping opportunities set amongst fine

Inca and Spanish colonial architecture.

Included is a BTG ticket which provides

access to most of Cusco's attractions and

museums, so you choose where you wish to

spend your day. (B)



DAY 9: Fly Cusco to Santiago

You will be transferred to the airport for

your onward flight to the Chilean capital of

Santiago, surrounded by the snow-capped

mountains of the Andes and the Chilean

Coastal Range. You will be collected from

the airport and transferred to your hotel by

private car transfer. The rest of the day is

yours to recover. (B)



DAY 10: Santiago

Spend your morning getting to know

Santiago on a half-day city tour. You will

visit the highlights that this cosmopolitan

city has to offer. The rest of the afternoon is

free for you to explore the local area near

your hotel. Barrio Lastarria is an upmarket,

vibrant, and safe neighbourhood, home to

some of Santiago's best cafes, bars, and

restaurants, with lots of boutique retail

stores. In the evening enjoy a local Chilean

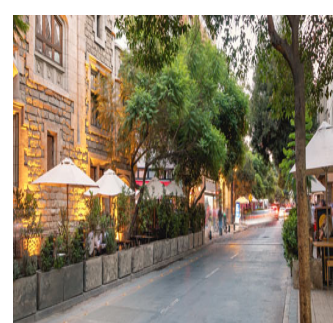
dinner in a private apartment. This is a

family styled dinner, shared with other like

minded guests and includes wine and local

drinks. This is an exclusive experience not

to be missed! (B,D)



South America - Signature South America

Trip Code

MCCHCSA

Departure

Day 11: Valparaiso & Casablanca Valley

Duration

20 Days

Head towards the Chilean coastline. Your

first stop is the charming Valparaiso. This

city has been declared a UNESCO World

Heritage site and many of its colourful

buildings perch in a haphazard fashion on

the hillside. You will take a walk to discover

the local art galleries and street art which

embody Valparaiso's bohemian lifestyle,

including visiting one stairwell which

claims, "we are not hippies, we are

happies." You will also take a ride on one of

the city's remaining funiculars. Then it is on

to the Casablanca Valley. This region is

famous for wine production, in particular

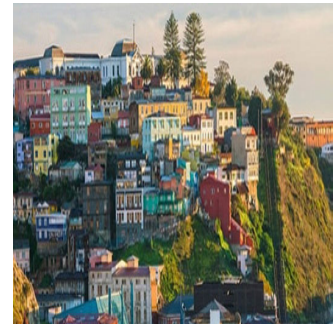
Chardonnay, Sauvignon Blanc and Pinot

Noir varieties. You will visit a cellar door for

a premium wine tasting and have the

chance to purchase some wines and other

souvenirs. (B)



DAY 12: Fly Santiago to Buenos Aires

You will be collected from your hotel and

transferred by private transfer to Santiago

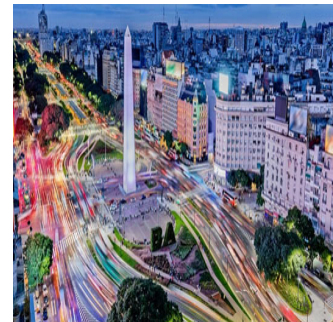
airport to meet your flight to Buenos Aires.

On arrival, a driver will be waiting to

transfer you to your hotel in one of Buenos

Aires' most elegant, historic, and

picturesque neighbourhoods, Recoleta. (B)



South America - Signature South America

Trip Code

MCCHCSA

Departure

Day 13: Buenos Aires City Tour

Duration

20 Days

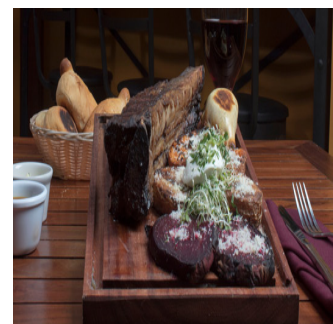
The morning is at leisure before you are collected from your hotel for a three hour afternoon city tour. We have designed this

tour exclusively for our guests. You will visit the main square; Plaza De Mayo, home to the famous Casa Rosada and then continue on to the charming suburb of La Boca - the birthplace of Tango where you will have some time to wander the streets. Then head to Recoleta Cemetery, one of the most beautiful in the world. Entrance is included and your guide will point out the graves of famous Argentinian's such as Eva Peron, or Evita. (B).



DAY 14: Walking with a Local Tour & Evening Asado Dinner

You will be collected from your hotel in the afternoon for a unique half day walking tour with your own local guide. You will start by exploring the streets of the upscale and exclusive neighbourhood of Recoleta through a local's eyes. Continue on through the beating heart of the city, Retiro, home to many significant government buildings filled with fascinating history of Buenos Aires. Chat with your guide over a local Patagonian Ice Cream or a Coffee, before heading over to the bohemian barrio of San Telmo to explore the local markets, tasting local specialties like Empanada's. You will also visit an old Conventillo and the quaint Plaza Dorrego. In the evening you will be collected from your hotel and transferred to an Asado restaurant where you will enjoy a traditional Argentinian steakhouse. A closed-door dining experience awaits you that explores new ways of serving Argentine Asado classics, along with a wine pairing menu that has also been designed to best enhance the flavours of the ingredients while presenting you with some of the best boutique wines from Argentina. (B,D).



South America - Signature South America

Trip Code

MCCHCSA

Departure

Day 15: Buenos Aires to Puerto Iguazu

Duration

20 Days

A transfer will take you to the airport for

your flight to Puerto Iguazu. The

location is in the heart of Brazil.

Spectacular Iguazu Falls straddles the

Argentine-Brazil border, is made up of 275

individual waterfalls lining a 2.7km wide

horseshoe-shaped gorge. You will have the

chance to experience the falls from both the

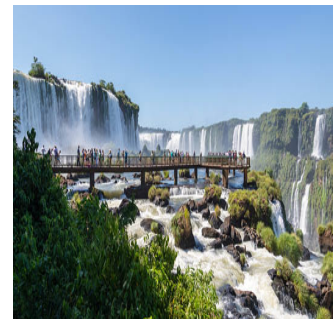
Argentinian and the Brazilian sides, the

Brazilian side offering a broader, panoramic

view, with the Argentinian side offering a

series of catwalks that allow you to

experience the falls up close. (B)



DAY 16: Iguazu Falls

Get ready for a full day of exploring the

Argentine side of the falls. We start early to

beat the crowds and get the first train to the

Devil's Throat. Walk along the paths over

the islands which take you to a balcony over

the falls and the most spectacular view of

the entire Devil's Gorge. You will then have

plenty of time to walk the paths on the

upper circuit, providing you with a

magnificent panoramic view, and the lower

circuit, which has great views from below

and around the falls. On completion of the

tour, you will be taken to your hotel. (B).



DAY 17: Fly Iguazu to Rio de Janeiro

Today you will cross into Brazil to enjoy a

half-day tour of the Brazilian side where you

will experience great panoramic views of

the Argentinian side of the falls. At the

appropriate time, you will be collected from

the Brazil National Park and transferred to

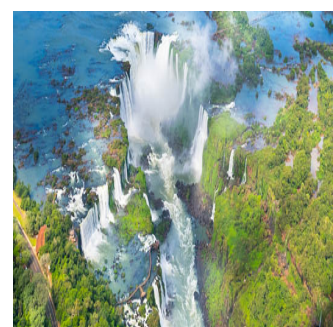
the Foz do Iguacu airport for your onward

flight to Rio De Janeiro. Rio never fails to

amaze with its sandy beaches, carefree

lifestyle, and unparalleled natural beauty.

(B)



South America - Signature South America

Trip Code

MCCHCSA

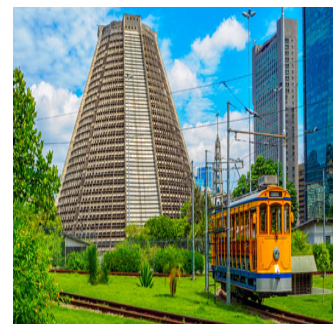
Departure

Day 18: Half Day Tour of Santa Teresa &

Duration

20 Days

Join us on a discovery tour of Rio de Janeiro that heads to the most beloved neighbourhoods, Santa Teresa and Lapa. The bustling suburb of Lapa is famous for its nightlife, historical monuments, and the Roman-style Acros da Lapa aqueducts. Santa Teresa, which is reached via a charming tram ride over the aqueducts is known for its cobblestone streets, beautiful architecture, charming upper-class residential homes, and stunning views from the hillside overlooking the city. Enjoy a local Brazilian speciality, Acai with your local guide along the way. Finally, a visit to the famous Selaron Staircase. The colourful stairway is covered in mosaic tiles, the work of Chilean born artist Jorge Salaron. The afternoon is free for you to enjoy the beaches of Rio. (B)



DAY 19: Copacabana, Corcovado & Sugarloaf Tour

With an early start, today you will join a city tour exclusively designed for our guests for taking in all of Rio's famous sights, including Corcovado, to get up close to the Christ the Redeemer statue. The next stop is Sugar Loaf Mountain, where you will board a cable car to the top of Urca Hill, with spectacular views of Rio's famous beaches, bays, hills, and the city. Enjoy a traditional Brazilian BBQ for lunch and continue exploring more of the city including to Saint Benedict Monastery, Praça Maua, Duque de Caxias Palace and the Metropolitan Cathedral. Pass by Flamengo and Botafogo beaches on your way back to your hotel. (B,L)



South America - Signature South America

Trip Code
 MCCHCSA
 Departure
 Daily 20: Depart Rio de Janeiro
 Duration
 20 Days
 As well as you are transferred to the
 location for your onward flight. (B)
 Peru, Chile, Argentina & Brazil



Inclusions & Details

Accommodation

Hotels

INCLUSIONS

- Private airport/hotel transfers throughout
- Economy class internal flights as part of the itinerary (based on LATAM Airpass which must be combined with LATAM international flights)
- Accommodation with breakfast daily
- Sightseeing with local English-speaking guide as stated
- Other meals where stated
- Most entrance/National Park fees

Inclusions

EXCLUSIONS

- International flights and internal flights other than where specified
- Visa & reciprocity fees (if applicable)
- Travel insurance
- Beverages
- Personal expenses
- Gratuities for tour guides/drivers
- Any items not mentioned as included

Difficulty Rating

2 (Light Adventure - High Altitude In Some Areas)

Single Surcharge

A single supplement surcharge applies and is subject to availability. Please [contact us](#) for more information.

Notes

Prices are based on per person, twin share.
 Prices are correct at time of publishing but are subject to change at any time.
 All entrance fees are subject to change without prior notice.

Price Dependent upon

Currency fluctuation, seasonality and availability at time of booking.

Sustainability