

Brazil - Pantanal & Bonito Extension | Caiman Eco Lodge

Trip Code

BRTSPX5

Departure



Introduction

Stay in the heart of the Pantanal at Caiman Ecolodge. This intimate accommodation provides the perfect base for exploring what is the world's largest wetlands. You will have two full days to enjoy included and optional excursions to the Pantanal including 4WD safari's, birdwatching, hiking, canoeing and more. From Caiman Ecolodge, you will continue to Bonito where you will enjoy two snorkelling experiences on the Sucuri and Olho D'agua Rivers. You will also journey to Buraco das Aras, one of the largest sink holes in the world.

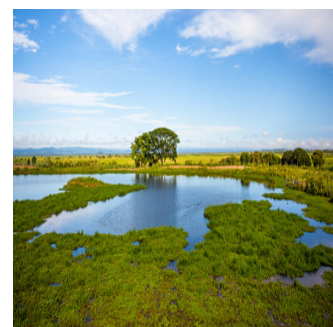
We also have a standard option available at [Pousada Aguape](#).

Pricing and availability is subject to change and offer and may be withdrawn or varied at any time. Please [contact us](#) for the latest availability.

Itinerary

DAY 1: Arrival in the Pantanal

From Campo Grande airport you will be transferred to Caiman Ecolodge, your superior accommodation located in the heart of the Pantanal. Situated in Cuyabeno Reserve, these intimate lodges will be your base for exploration for the coming days. Settle into your surroundings after your arrival by kicking back in a hammock or taking in the rainforest canopy from the viewing tower.



Brazil - Pantanal & Bonito Extension | Caiman Eco Lodge

Trip Code

BRTSPX5

Departure

Day 2: Pantanal day tour

Duration

6 Days an excursion to the Southern Pantanal

Locations of Caiman Ecolodge's naturalist

guides. They will teach you everything there

is to know about the local flora, fauna and

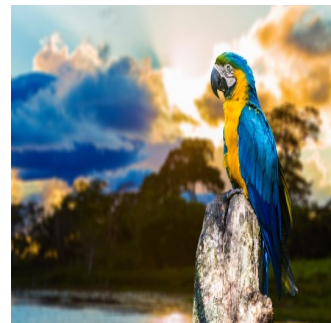
culture of the Pantanal region. Depending

on your interest you can choose to take a

4WD safari, paddle on a canoe tour, take a

walk on a hiking trail or enjoy a nocturnal

spotlight tour of the forest.



DAY 3: Pantanal day tour

Today you have an additional free day to

enjoy more of the Pantanal. This time allows

you to enjoy more of the included activities

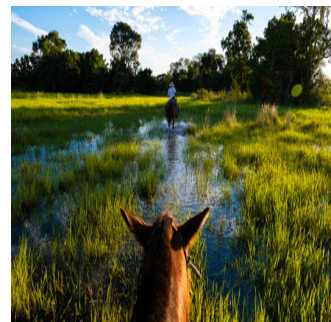
from day two or, alternatively, to book an

optional excursion. Options include

horseback riding, a bicycle tour, a visit to

the Hyacinth Macaw Institute or a Oncafari

to observe Jaguars in their natural habitat.



DAY 4: Rio Sucuri half day tour

Departing Caiman Ecolodge you will be

transferred to Bonito, stopping enroute for a

half day snorkelling the Sucuri River. Your

snorkelling tour begins with a walk through

the Riparian Forest of the Sucuri River

where you can spot and observe animals

such as the capybara in their native habitat.

You will then enter the river to float

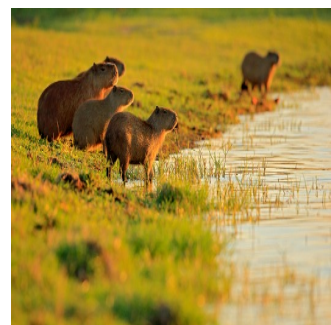
downstream with snorkelling gear,

observing a diverse array of fish and

underwater plant life in the clear waters.

The ecotourism hub of Bonito will be your

base for the following days activities.



Brazil - Pantanal & Bonito Extension | Caiman Eco Lodge

Trip Code

BRTSPX5

Departure

Day 5: Rio de Prata Snorkelling & Buraco

Duration

6 Days

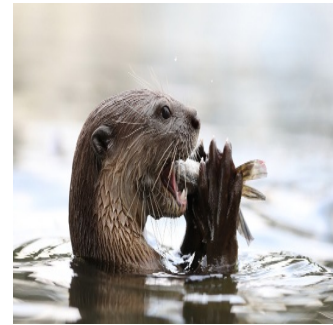
Location

During this tour you will be given another opportunity to hike the Riparian Forest and snorkel, this time at Rio de Prata on the Olho D'agua River. You will again be amazed as you gaze at dozens of fish and aquatic plants as you snorkel the clear waters. In the afternoon you will take a tour to Buraco das Aras (Macaw Pit). This massive sink hole provides a habitat to 157 bird species and you can visit two of the main viewpoints to observe the birds within the sandstone crater.



DAY 6: Depart Bonito

You will be transferred to the Campo Grande airport to depart for your next destination.



Inclusions & Details

Accommodation

Jungle Lodge & Hotel

Inclusions

Accommodation

Tours as mentioned

Airport transfers

All meals at Pantanal Lodge

Breakfast daily in Bonito

Inclusions

Exclusions

International and internal flights not indicated

Visa and reciprocity fees (if applicable)

Local taxes (if applicable)

Travel insurance

Extra Beverages

Personal expenses

Gratuities for tour guides and drivers

Any items not mentioned as included

Brazil - Pantanal & Bonito Extension | Caiman Eco Lodge

Trip Code

BRTSPX5

Departure

Difficulty Rating

1 (easy adventure)

Duration

Single Surcharge

A single supplement surcharge applies and is subject to availability. Please contact us for more information.

Locations

The order of activities are subject to change.

Brazil

Notes

Prices are based on per person, twin share.

Prices are correct at time of publishing but are subject to change at any time.

All entrance fees are subject to change without prior notice.

Price Dependent upon Seasonality and availability at time of booking.

Sustainability