

The Arctic - Arctic Golden Autumn & Northern Lights | Sylvia Earle

Trip Code

ACAEGNL

Departure



Introduction

Embark on an extraordinary Arctic adventure. From the vibrant capital of Iceland to the untouched and pristine landscapes of the High Arctic, this expedition offers an unparalleled journey. Discover the raw beauty of Iceland, with its cascading waterfalls like Dynjandi and the excitement of whale watching. Immerse yourself in the secluded charm of Vigur Island and the rich culture of Ísafjörður. Venture deep into the Arctic as we explore the mysterious Jan Mayen, a volcanic island brimming with wildlife. Experience the magic of Svalbard in autumn, a polar paradise famous for its polar bears and breathtaking glaciers. Conclude your journey in the enchanting landscapes of Norway, with visits to North Cape and Tromsø, gateways to the northern lights. This expedition is a once-in-a-lifetime opportunity to witness the Arctic's awe-inspiring beauty and embrace the thrill of exploration.

Itinerary

The Arctic - Arctic Golden Autumn & Northern Lights | Sylvia Earle

Trip Code

ACAEGNL

Departure

18/08/2026

DAY 1 - Arrive in Reykjavik

Duration

22 Days

Having made your way to Reykjavik, you

will be met by a representative and

transferred to our group hotel. Upon arrival

at your included hotel, please visit the

Aurora Expeditions hospitality area where

you can leave your luggage and enjoy

refreshments if arriving prior to 4pm. Whilst

here you can collect your luggage cabin

tags and speak with our ground operations

team, who may have information to share

with you about preembarkation or to

provide you with information about where

to dine, withdraw cash or purchase last

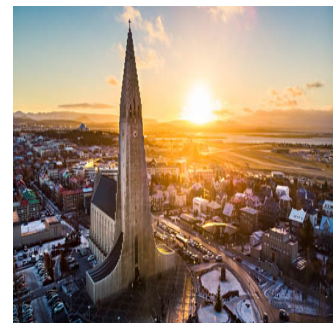
minute items from a local pharmacy or

supermarket. The remainder of your time is

at leisure. All meals today are at your own

expense. Accommodation: The Grand Hotel

Reykjavik (or similar)



DAY 2: Embarkation

Today we follow the path of one of

Reykjavik's most popular seismic attractions

- the Golden Circle. Stops along our route

include Thingvellir National Park,

accredited as the site of Iceland's first

parliament. A shaky start to the new nation,

it is also the point where the Eurasia and

North American tectonic plates meet as an

open fissure. Our next stop is Gullfoss

waterfall. This impressive water feature

tumbles 34 meters into the Hvítá River,

offering a popular photographic

opportunity. Next we explore the

geothermal fields and geysir's for which

Iceland is famous. The variety of hot springs

and bubbling pools are mesmerising as the

sheer capacity of water and steam erupting

from the ground makes you ponder just how

much power is beneath your feet. Late

afternoon we return to Reykjavik to board

the Sylvia Earle. After boarding, there's

time to settle into your cabin before our

important safety briefings before we 'throw

the lines' to begin our adventure. This

evening, meet your expedition team and

crew at the Welcome Dinner.



The Arctic - Arctic Golden Autumn & Northern Lights | Sylvia Earle

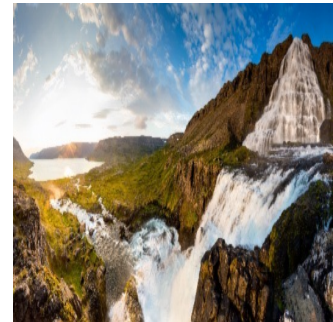
Trip Code
ACAEGNL
Departure
18/08/2026

Duration

22 Days
DAY 3: Dynjandi - Westfjords

Locations

Over the next two days, we explore the Westfjords region featuring outstanding landscapes with jaw-dropping views of dramatic fjords carved by ancient glaciers, sheer table mountains that plunge into the sea and pristine North Atlantic vegetation. Immerse yourself in the tranquillity as we cruise northward, taking in breathtaking landscapes and keeping a watchful eye for whales. Later, we'll embark on a Zodiac landing to witness the awe-inspiring power of Dynjandi waterfall.



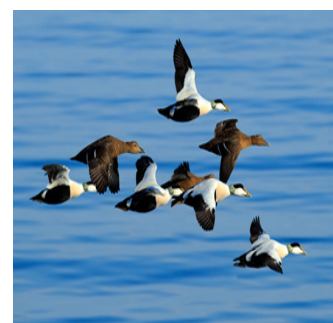
DAY 4: Vigur Island & Isadjodur

On Vigur Island, birdwatchers can try and tick a few species on their list, while others can enjoy walks and hikes of varying levels of difficulty, soaking in the stunning surrounds. The island's unique ecosystem is a haven for birdlife, making it a paradise for nature enthusiasts. Stroll along the coastline, keeping an eye out for puffins and other seabirds, or venture deeper into the island to discover hidden gems. With its rolling hills, picturesque landscapes, and fresh sea air, Vigur offers an unforgettable experience. The region also features attractive towns such as Isafjordur, surrounded by sheer mountains and steeped in history, evident in its preserved wooden architecture. Delight in its lively cultural scene and abundant outdoor activities.



DAY 5: At Sea towards Jan Mayen

Enjoy the sea crossing to Jan Mayen Island accompanied by sea birds while searching for whales. Enjoy informative talks from our team of experts, get to know your fellow expeditioners, stay active in the gym or treat yourself to a massage in the wellness centre.



The Arctic - Arctic Golden Autumn & Northern Lights | Sylvia Earle

Trip Code

ACAEGNL

Departure

18/08/2026

Duration

DAY 6: Jan Mayen

22 Days

Locations

The approach to Jan Mayen is spectacular.

Iceberg, Jan Mayen, Svalbard, Norway

The huge 2,277 metre (7,470 foot)

Beerenberg volcano is the northernmost

active volcano in the world, and it last

erupted in 1985. The northern part of the

island is a great place to look for whales and

dolphins and contains impressive glaciers,

some of which reach the sea. If the weather

is favourable, we will try to land at

Kvalrossbukta, a relatively sheltered bay on

the island's west coast. This is one of the

landings used to supply the weather station

Olonkinbyen, situated on the eastern side of

the island.



DAY 7: At Sea towards Svalbard - Day 7 & 8

The Norwegian Sea surrounding Jan Mayen

offers excellent whale-watching

opportunities (bottlenose, fin, and perhaps

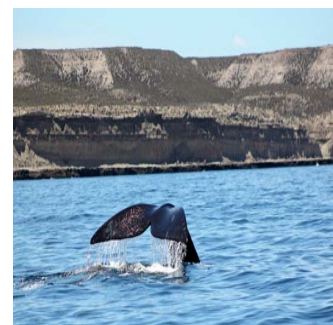
bowhead whales in the pack ice). Sail

towards Svalbard, retracing the route of

Dutch explorer Willem Barents who

discovered Spitsbergen and the Barents

Sea, named after him.



The Arctic - Arctic Golden Autumn & Northern Lights | Sylvia Earle

Trip Code

ACAEGNL

Departure

18/08/2026

DAY 9 - Svalbard - Day 9 to 12

Duration

22 Days

Svalbard offers Arctic wilderness at its best.

Our experienced expedition team, who have

made countless journeys to this area, will

use their expertise to design our day-to-day

itinerary, choosing the best options based

on the prevailing weather, sea-ice

conditions, and wildlife encounters.

Phenomenal fjords, magnificent mountains

ranges and a polar desert rich in fossils set

the stage for heroic tales of early

exploration. See walrus hauled-out on sea

ice or on beaches. On land, stretch our legs

on walks across tundra coming out in

brightly-coloured wildflowers. We visit

towering cliffs noisy with nesting guillemots

and puffins, and scree slopes that hold

Svalbard's largest little auk colonies. Most

memorable are encounters with the

majestic polar bear on pack ice. If you have

chosen an optional activity such as

kayaking, you'll have the option to enjoy the

activity when conditions allow. For those

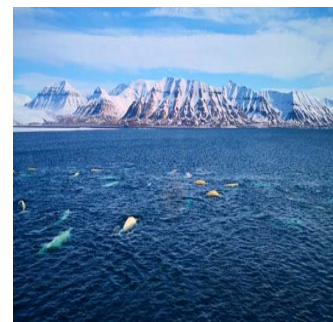
who are enthusiastic to participate in a

polar plunge, as soon as conditions are

suitable, you'll hear the announcement to

prepare for an exhilarating plunge, a

memory you'll savour for years to come.



The Arctic - Arctic Golden Autumn & Northern Lights | Sylvia Earle

Trip Code

ACAEGNL

Departure

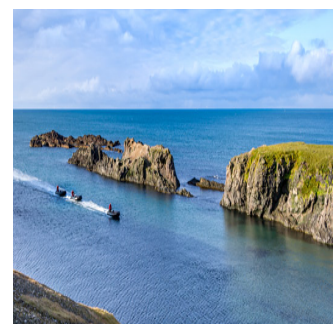
18/08/2026

DAY 13: Bear Island

Duration

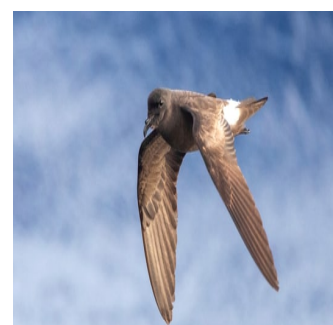
22 Days

Bear Island, Svalbard's southernmost outpost, is a remote gem nestled halfway between Spitsbergen and Norway's North Cape. Despite its name, polar bears haven't been spotted here since 2004, but the island's history is deeply intertwined with the Arctic's most iconic predator, thanks to Dutch explorer Willem Barentsz's encounter in 1596. Strategically positioned at the confluence of the Norwegian and Barents Seas, Bear Island boasts a unique landscape. Its northern plains, dotted with freshwater lakes, contrast sharply with the dramatic cliffs that characterise the southern coast. This pristine environment, designated a Nature Reserve, is a haven for wildlife. The island's southern cliffs are a birdwatcher's paradise, hosting vast colonies of seabirds, including the dominant Black-legged Kittiwake, Little Auk, Common Guillemot, and Brünnich's Guillemot. Zodiac cruises offer an exhilarating opportunity to witness these magnificent creatures in their natural habitat, with the chance to spot rarer species like Atlantic Puffins, Northern Gannets, Glaucous Gulls, and Great Skuas.



DAY 14: At Sea towards Norway

Enjoy informative talks from our team of experts, get to know your fellow expeditioners or stay active in the gym. Remember to look to the skies at night and hope for sightings of the northern lights.



The Arctic - Arctic Golden Autumn & Northern Lights | Sylvia Earle

Trip Code

ACAEGNL

Departure

18/08/2026

14/09/2026 North Cape, Norwegian Coast

Duration

22 Days

Over the next few days, we explore parts of

Norway's remarkable 1,000-kilometre (600-

Island Jan Mayen, Svalbard, Norway,

in the coastal area. Starting in North Cape, in

the very north of the country, we make our

way south, stopping in the Lofoten Islands.

The spectacular northern lights are a

natural phenomenon that is most commonly

seen in the sky above the Arctic Circle,

between autumn and early spring. As we

are near North Cape in northern Norway,

keep a close watch in hope of witnessing

this dazzling spectacle in the night sky. The

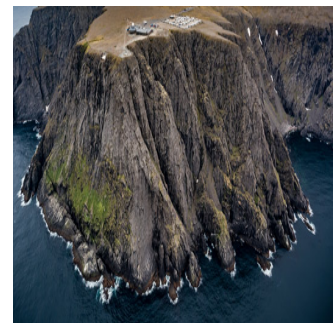
North Cape is located at a latitude of 71°

10' 21" and is Europe's northernmost point.

Today you can personalise your expedition

by choosing the experience that best suits

your interests and level of fitness.



The Arctic - Arctic Golden Autumn & Northern Lights | Sylvia Earle

Trip Code

ACAEGNL

Departure

18/08/2026

DAY 16: Arrive Tromsø

Duration

72 Days

Packed 72 days above the Arctic Circle at latitude

69°N; Tromsø is the main gateway to
Island, Jan Mayen, Svalbard, Norway,
experiencing the northern lights in Norway.

Today we embark on an enchanting journey

into the celestial wonders of the Arctic sky

at the Tromsø Science Centre. Join an

immersive experience that combines the

magic of a northern lights followed by an

engaging presentation by an astronomer,

providing you with insight into the

captivating phenomena of the aurora

borealis. Settle into the comfort of the

planetarium's auditorium for a cinematic

journey into the heart of the Arctic night.

Join the award-winning photographer Ole

Salomonsens on his journey through

northern Norway, Finland and Sweden in

pursuit of his passion - filming the wildest

and most spectacular light show the nature

has to offer. Extreme Auroras is a stunning

new full-dome visual, featuring the aurora in

science, history and myths. After the movie,

enjoy a live presentation by the in-house

astronomer, introducing them, a

presentation of the few Norse constellations

that are still known, and the Hunting Party

story from the Sami mythology. This talk

looks at the sky from a northern angle and

will add new knowledge to old. At the end

you will have time to explore the Science

Centre's interactive displays and exhibits.

Engage with hands-on activities that further

enhance your understanding of the natural

forces at play, making this experience both

entertaining and educational.



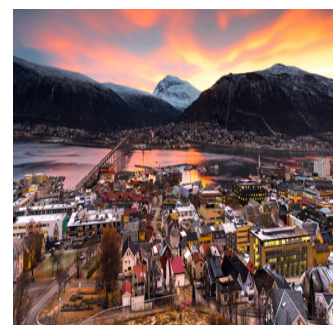
DAY 17: Disembarkation

Disembark in the early morning and bid a

fond farewell to fellow travellers before a

transfer to the airport to continue your

journey.



The Arctic - Arctic Golden Autumn & Northern Lights | Sylvia Earle

Trip Code
ACAEGNL
Departure
18/08/2026

Duration
22 Days

Inclusions & Details

Locations
Accommodation Iceland, Jan Mayen, Svalbard, Norway



Hotel & Cabin On board a Ship

INCLUSIONS

- All transfers as mentioned in the itinerary.
- One night's hotel accommodation including breakfast, in Reykjavik on Day 1.
- Visit Iceland's famous Golden Circle prior to embarkation, on Day 2.
- Onboard accommodation during voyage, including daily cabin service.
- All meals, snacks, tea and coffee during voyage.
- Beer, house wine and soft drinks with dinner.
- Captain's Farewell reception including four-course dinner, house cocktails, house beer and wine, non-alcoholic beverages.
- All shore excursions and Zodiac cruises.
- Educational lectures and guiding services provided by Expedition Team.
- Complimentary access to onboard expedition doctor and medical clinic (initial consultation).
- One 3-in-1 waterproof, polar expedition jacket.
- Complimentary use of Muck Boots during the voyage.
- Comprehensive pre-departure information.
- Port surcharges, permits and landing fees.
- Wi-Fi. Please note we travel to remote regions and therefore the connection can be unreliable.

Inclusions

EXCLUSIONS

- International or domestic flights - unless specified in itinerary
- Transfers - unless specified in itinerary
- Airport arrival or departure taxes
- Passport, visa, reciprocity and vaccination fees and charges
- Travel insurance or emergency evacuation charges
- Hotels and meals - unless specified in the itinerary
- Optional excursions and optional activity surcharges
- All items of a personal nature, including but not limited to alcoholic beverages and soft drinks (outside of dinner service), laundry services, personal clothing, medical expenses, wi-fi, email or phone charges
- Gratuities for ship's crew - *(A \$15 USD per person per day gratuity for the crew is automatically added to your onboard account. It is at your discretion if you would like to remove the tip (or adjust the amount) when you settle your bill. It is not necessary to tip the expedition team members. This gratuity amount is included for suites as part of their 'Suite Benefits'.)*

Difficulty Rating
Single Surcharge

- 2 (light adventure)
- Subject to availability upon request. Contact us for more details.
- Prices are based on per person, may be based on quad/triple/twin share.

Notes

- Prices are correct at time of publishing but are subject to change at any time.
- Itinerary is subject to change depending on weather and ice conditions

Price Dependent upon

- Departure date, fuel surcharges, cabin category, currency fluctuations, seasonality and availability.

Sustainability