

Galapagos Islands - South & Central Islands Cruise | Galapagos Angel

Trip Code
ECGGA5C
Departure



Introduction

Explore the southern and central islands of the Galapagos on this 5 day expedition cruise onboard the first class ship, Galapagos Angel to explore this amazing Archipleigo. This premium motor yacht is built to take just 16 passengers. You will enjoy a mix of hiking, wildlife spotting and snorkelling. You will visit a giant tortoise breeding centre and see amazing landscapes including a blowhole, lava floes and volcanic islands and spot a range of wildlife such as blue-footed boobies, albatross, sea lions and marine iguanas.

Check out the other itineraries on the Galapagos Angel: [5 Day Central & Northern Islands](#), [8 Day Western Islands](#), [4 Day Central & South Islands](#)

Itinerary

Galapagos Islands - South & Central Islands Cruise | Galapagos Angel

Trip Code

ECGGA5C

Departure

Selected Sundays
Direct Arrival & Santa Cruz Island

Duration

5 Days

Today marks the beginning of your
Ecuador, Galapagos Islands, South America
Galapagos adventure. You'll catch a

morning flight from either Quito or
Guayaquil to Baltra, where the Galapagos
Islands await. Upon arrival, after
completing immigration and collecting your
baggage, a friendly staff member will greet
you and escort you to a private bus, kicking
off your exploration of the archipelago.

Please remember to dress comfortably and
wear closed-toe shoes suitable for
excursions, as your first adventure in the
Galapagos begins right after landing and
before boarding your cruise. Don't forget to
bring along a long-brimmed hat, sunscreen,
sunglasses, and keep your camera within
easy reach to capture every moment. In the
afternoon, you'll journey to the highlands of
Santa Cruz, accessible by bus from Puerto
Ayora. Here, you'll discover a verdant
landscape dominated by lush Scalesia trees,
a striking contrast to the arid lowlands. As
you explore, you'll encounter awe-inspiring
lava tunnels, some stretching over half a
mile in length, offering a surreal experience.
Amidst this natural wonder, you'll enjoy
lunch.



Galapagos Islands - South & Central Islands Cruise | Galapagos Angel

Trip Code

ECGGA5C

Departure

Selected Sundays
Day 2 - Gardner Bay & Suarez Point

Duration

5 Days
Today's itinerary takes you to Gardner Bay,

along with Gardner Islet and Osborn Islet.

Location: Galapagos Islands, South America

Your adventure begins with a visit to

Gardner Bay, where you'll be greeted by a

stunning white-sand beach and a bustling

sea lion colony. Take a leisurely stroll along

the shore, basking in the beauty of your

surroundings, and keep an eye out for

playful sea lion pups frolicking in the

crystal-clear waters. Don't be surprised if

you encounter curious mockingbirds along

the way, adding to the charm of this idyllic

beach. In the afternoon, your journey

continues to Suarez Point, offering

opportunities for remarkable wildlife

encounters. As you traverse the trail, be on

the lookout for iconic Galapagos species

such as blue-footed boobies, albatrosses,

and Nazca boobies. Suarez Point is

renowned as the primary breeding site for

the waved albatross, with nearly all of the

world's population calling this island home.

Marvel at the sight of these majestic birds

as they gracefully take flight from the cliffs,

a truly awe-inspiring spectacle. You'll also

have the chance to witness the famous

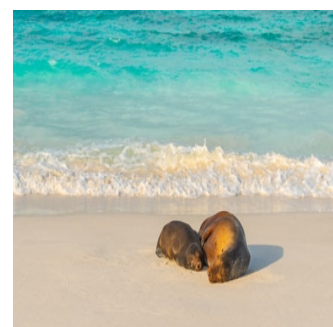
blowhole, where sea water erupts into the

air, creating a mesmerizing display. With its

stunning coastal vistas and abundant

wildlife, Suarez Point offers ample

opportunities for photography.



Galapagos Islands - South & Central Islands Cruise | Galapagos Angel

Trip Code

ECGGA5C

Departure

~~Selected Sundays~~
Day 3 - Santa Fe & South Plaza Island

Duration

5 Days

This morning's excursion takes you to Santa Fe Island (Barrington), renowned for its charming bay and anchorage nestled along

~~Ecuador, Galapagos Islands, South America~~

The island's northeast coast. Upon arrival, you'll have the opportunity to explore two distinct visitor trails. One trail leads to a captivating viewpoint atop a cliff, offering panoramic vistas of the surrounding landscape. The other trail meanders from a serene beach to a dense forest of towering prickly pear cacti. In the afternoon, your journey continues to South Plaza Island, a picturesque enclave characterized by its dramatic cliffs and rugged terrain. Formed by ancient lava flows, the island is now adorned with sprawling Opuntia cacti, lending it a surreal ambiance. South Plaza is home to a thriving colony of sea lions, which can often be observed basking along the rocky shoreline. Additionally, the island boasts vibrant populations of yellow and red land iguanas, adding a splash of color to the arid landscape. Among the island's distinctive flora, the Sesuvium stands out, displaying varying hues of green and yellow during the rainy season and transforming into a vivid red spectacle during the dry season, from June to January.



Galapagos Islands - South & Central Islands Cruise | Galapagos Angel

Trip Code

ECGGA5C

Departure

Selected Sundays
Day 4: Black Turtle Cove & Dragon Hill

Duration

5 Days itinerary includes a visit to Black

Turtle Cove, nestled in the northern reaches

of Santa Cruz, this secluded inlet,

ensconced by mangroves, offers a serene haven for burgeoning marine life.

Accessible only by dinghy, the tranquil waters of the cove teem with activity,

providing sightings of black-tip and white-tip reef sharks, graceful sea turtles, and an

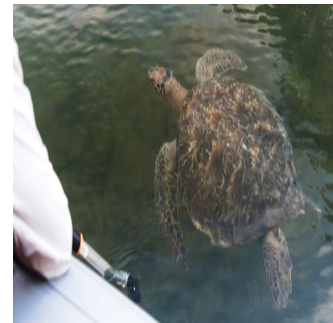
array of majestic rays. In the afternoon you will explore Dragon Hill on Santa Cruz

Island. This site, one of the newest accessible to Galapagos tourists, offers an

extended walking trail. Traverse along a picturesque beach and ascend a trail

leading to the lagoon lookout, where vibrant flamingos, pintail ducks, and land iguanas

grace the landscape



DAY 5: Bachas Beach & Departure

This morning, you will embark on an expedition to Bachas Beach, nestled along the north shore of Santa Cruz. This inviting beach is perfect for a refreshing swim.

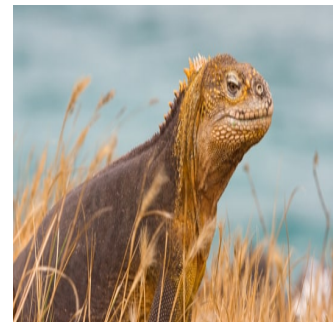
Explore remnants of the U.S. World War II presence, including a floating pier. Keep an eye out for the diverse wildlife that calls

Bachas Beach home, such as flamingos, Sally Lightfoot crabs, hermit crabs, black-necked stilts, and whimbrels. Witness the

fascinating nesting grounds of sea turtles, marking the end of your Galapagos

experience. After this final visit, you will be transferred to the Baltra airport in time for

your flight back to the mainland.



Inclusions & Details

Accommodation Cabin on board a ship

Galapagos Islands - South & Central Islands Cruise | Galapagos Angel

Trip Code

ECGGA5C

Departure

Selected Sundays

Duration

5 Days

Locations

Ecuador, Galapagos Islands, South America



INCLUSIONS

All meals and excursions while onboard the ship

Transfers in the islands

Bilingual National Park Guide

Use of snorkelling equipment/wetsuit

Use of underwater camera

Free Airport Assistance*

Hotel night in Quito or Guayaquil (the day before the cruise)*

Free transfer one way to Galapagos Flights*

Inclusions

*Applies only when purchasing roundtrip Galapagos/mainland airfare from the cruise operator

EXCLUSIONS

Roundtrip airfare to/from Galapagos

Alcoholic drinks

Galapagos National Park Entrance fee (US\$200 per person from Aug 2024 - Subject to change)

Galapagos Transit Control Card (USD\$20 per person - Subject to change)

Travel/Medical insurance

Gratuities

Personal Expenses

Difficulty Rating

2 (light adventure)

Single Surcharge

A single supplement surcharge applies and is subject to availability. Please contact us for more information.

All entrance fees are subject to change without prior notice.

Notes

* Itinerary is subject to change depending on weather conditions and government regulations.

Price Dependent upon Seasonality, fuel surcharges, currency fluctuations and availability at time of booking.

Sustainability