

Galapagos Islands - Galapagos North, East & Southern Islands Cruise | Seaman Journey

Trip Code
ECSJ9C1
Departure



Introduction

M/C Galapagos Seaman Journey is a first class catamaran offering superior comfort, size, style, and stability. The Galapagos Seaman Journey makes it possible to enjoy several cruises in the Galapagos with different itineraries that include amazing land tours on most of the Galapagos Islands. During these Galapagos Cruises, guests encounter many endemic species like Galapagos Giant Tortoises, Penguins, Land and Marine Iguanas, Frigate Birds, Blue Footed Boobies, and much more!

Please note that the below itinerary is a guide and that itineraries vary depending on departure date. Your sales consultant will provide you with more details on the different itinerary options available and applicable departure dates.

The Seaman Journey Experience

M/C Galapagos Seaman Journey is an expeditionary first class catamaran that began sailing the Galapagos Islands in January 2008. Superior comfort, size, style, and stability are what you can expect when choosing this catamaran to fulfill your Galapagos adventures wants and needs. This vessel, with a maximum capacity of 16 passengers, provides in each of its corners, areas for rest and recreation for everyone. For the adults who might want to relax and kick back, we offer a great bar and lounge area where they are served by our bartender whilst you relax and watch the Galapagos go by. Make landings on sites that offer beautiful scenery and the ability to get up close and personal with the archipelago, accompanied by the knowledgeable staff members found on board who will offer you intel and insight into this magnificent part of the world. The M/C Galapagos Seaman Journey, another jewel from the well known Galapagos Journey Fleet, the perfect combination of adventure, comfort, service and excellence that offers four, five, eight, eleven, twelve and fifteen day itineraries.

GREEN POINTS!

Galapagos Islands - Galapagos North, East & Southern Islands Cruise | Seaman Journey

Trip Code

ECSJ9C1

Departure

Selected Thursdays

â€¢ The Seaman is single use plastic free â€¢ Reusable water-bottles are offered to all guests â€¢ Naturalist guides

offer educational environmental lectures to all guests. â€¢ All guest leave with a deep love and respect for nature.

Duration

9 Days

Locations

The Seaman also offers a [5 day cruise](#), [7 day cruise](#), [9 day cruise](#), [11 day cruise](#) and [15 day cruises](#).

Galapagos Islands, Ecuador

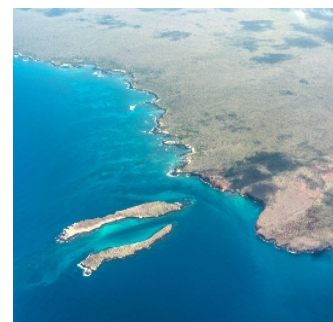
* Itinerary is subject to change depending on weather conditions and government regulations.

PLEASE NOTE: Pricing is subject to change and availability at the time of booking. [Contact us](#) for more information.

Itinerary

DAY 1: Arrival & Bartolome Island

On this day, you'll be flying to the Galapagos Islands. Please note that due to regulations set by the Galapagos Government, there is a migration control card fee of \$20 USD that must be paid. Upon arrival in Santa Cruz, passengers must undergo an airport inspection to prevent the introduction of foreign plants or animals to the archipelago. Additionally, this inspection point is where passengers are required to pay the entrance fee for the Galapagos National Park. As of August 2024, foreign passengers pay \$200, while children (under 12 years old) pay \$100. Later, your guide will meet you and assist with carrying your luggage to the bus. Passengers will then be transferred to the Catamaran Seaman Journey via a motorized boat called Panga. In the afternoon, you'll visit Bartolome Island, situated across Sullivan Bay. With an altitude of 114 meters, this island offers one of the most breathtaking landscapes in the Galapagos Islands, including volcanic cones, lunar-like craters, lava fields, and the famous Toba-formed pinnacle eroded by the sea. Vegetation on this island is scarce. Bartolome Island features two stunning beaches where marine turtles nest, and at the base of the pinnacle, you can find a small colony of Galapagos penguins.



Galapagos Islands - Galapagos North, East & Southern Islands Cruise | Seaman Journey

Trip Code

ECSJ9C1

Departure

Selected Thursdays

Duration
9 Days

Locations

Galapagos Islands, Ecuador

Today, you'll visit Mosquera Islet, situated between North Seymour and Baltra. Despite being one of the smallest islands in the Galápagos, Mosquera Islet boasts unique geological features. Formed by volcanic uplift, it lacks a visible crater and features remarkably flat terrain. What sets Mosquera apart is its striking contrast of colors. From the beautiful white sand beach to the transparent turquoise waters, lush green vegetation, and jet-black lava rocks, the island offers a picturesque landscape perfect for photography. Don't miss capturing the stunning scenery, especially during the golden light of early morning or at sunset. In the afternoon, your next destination is North Seymour. Unlike volcanic islands, North Seymour is a raised island with a generally flat terrain filled with rocks. It serves as an important nesting site for a large population of magnificent frigatebirds. Here, you'll also witness the captivating courtship dance of the blue-footed boobies in the open areas, while swallow-tailed gulls perch on the cliff edges. Despite the powerful surf along the outer shore, you'll find sea lions hauling out onto the beach, sometimes even enjoying body-surfing in the waves.



Galapagos Islands - Galapagos North, East & Southern Islands Cruise | Seaman Journey

Trip Code

ECSJ9C1

Departure

Selected Thursdays
Darwin Bay, Darwin Bay, Darwin Bay

Duration

9 Days

Location

This morning, your destination is Genovesa

Galapagos Islands, Ecuador

Specifically, El Barranco, known as

"The Cliff." Situated in the southern part of

Darwin Bay, El Barranco offers a visitor site

that consists of volcanic rock trails spanning

approximately 1.5 km, typically taking

around 2 hours to complete. This area

represents the youngest geological

formation on the island. The cliff itself,

located in the southern part, is comprised of

delicate lava formations. Natural erosion

within these lava flows has created optimal

nesting grounds for Storm Petrels, where

you can observe two species nesting in

cavities and holes within the lava. Among

the inhabitants of this area, the short-eared

owl stands out as one of the main predators.

The red-footed booby, unique to the outer

islands of the archipelago such as Punta

Pitt, Gardner (Floreana), Wolf, Darwin, and

Genovesa, can also be found here, along

with the masked booby. During "panga

rides" along the cliffs, you may spot fur sea

lions and various species of seabirds. Later

today, you'll visit Darwin Bay, formed when

the island's crater collapsed below sea level.

A wet landing awaits you on a stunning

white coral sandy beach. This island is

renowned among birdwatchers for its

diverse avian population, including red-

footed boobies, masked boobies, wandering

tattlers, lava gulls, whimbrels, yellow-

crowned and black-crowned lava herons,

and yellow warblers. As you traverse the

trail, ascending gradually to the cliff's edge,

you'll have the opportunity to observe Red-

Foots nesting in the Mangrove trees below.

Birdwatchers can also spot sharp-beaked

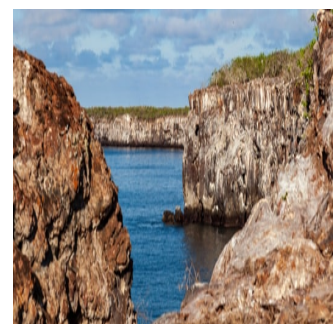
finches, large cactus and ground finches,

Galapagos doves, and swallow-tailed gulls

along the way. At the trail's conclusion, a

breathhtaking view of the island and its

abundant birdlife awaits at the cliff's edge.



Galapagos Islands - Galapagos North, East & Southern Islands Cruise | Seaman Journey

Trip Code

ECSJ9C1

Departure

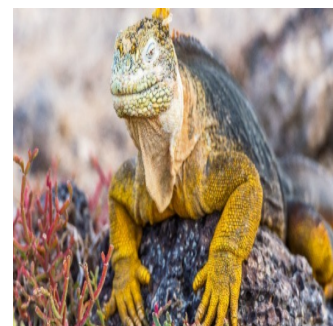
Selected Thursdays
Day 4 to Santa Fe Island & Santa Fe

Duration

9 Days

Locations

Today, your journey leads you to Plazas, Galapagos Islands, Ecuador. Plazas lies to the east of Santa Cruz Island and is part of the twin islands known as Islas Plazas. Despite its modest size, Plazas hosts some of the most fascinating and remarkable species found in the Galapagos. Notably, the Plazas land iguanas here are smaller compared to their counterparts on other islands. Throughout the island, you'll encounter several hybrid iguanas resulting from the crossbreeding of male marine iguanas and female land iguanas. These hybrids are easily identifiable by their distinctive black/gray color, featuring the crest of a land iguana and the face and tail reminiscent of a marine iguana. The thriving population of iguanas owes much to the abundance of tunas, their preferred food source. As you explore, keep an eye out for swallow-tailed gulls nesting on the rugged cliffs, as well as other seabirds like Audubon shearwaters, red-billed tropicbirds, frigatebirds, and brown pelicans. In the afternoon, your adventure continues to Santa Fe, situated in the southeastern region of the Galapagos. Unlike most islands in the archipelago, Santa Fe's formation stems from uplift rather than volcanic activity, resulting in its predominantly flat terrain. Some theories even propose that Santa Fe could be the oldest island in the archipelago. Santa Fe is home to a variety of endemic species, including the Galapagos hawk, Galapagos snake, Galapagos mockingbird, rice rats, and one of the two species of land iguanas found in the islands. Upon disembarking into the crystal-clear waters, you'll encounter one of the many sea lion colonies inhabiting the area. Along the trail, you'll observe numerous salt bushes and towering giant prickly pear cacti, characteristic of oceanic island gigantism. Don't miss the opportunity for snorkeling among playful sea lions and vibrant tropical fish.



Galapagos Islands - Galapagos North, East & Southern Islands Cruise | Seaman Journey

Trip Code

ECSJ9C1

Departure

Selected Thursdays

David Rodriguez Breeding Centre &

Duration

9 Days

Location

Galapagos Islands, Ecuador

David Rodriguez Land Tortoise Breeding Centre.

In 2002, the Galapagos National Park

Service initiated a program for the breeding

and care of tortoises in captivity,

establishing the Tortoise Breeding Centre

under the name Jacinto Gordillo. In 2016, it

was renamed the David Rodriguez Tortoise

Breeding Centre in honor of David

Rodriguez's 39 years of service as a park

ranger. Located in the southeast of San

Cristobal, approximately 22.5 km from

Puerto Baquerizo Moreno, the David

Rodriguez Tortoise Breeding Centre is

accessible by land. The bus journey takes

around 40 minutes and is situated near

Cerro Colorado. This breeding centre aims

to enhance the population of giant tortoises,

Chelonoides chathamensis, on San Cristóbal

Island by providing an environment similar

to their natural habitat, thereby promoting

tourism development on the island. Later in

the day, you'll visit the Gianni Arismendy

Environmental Interpretation Centre. This

center features lush gardens and

brehtaking ocean views, providing visitors

with insights into the geological and human

history of the islands, conservation efforts,

and natural history. As the oldest museum

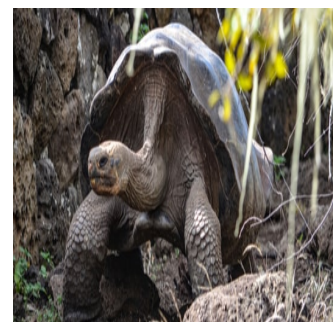
of Natural History in the Galapagos Islands,

it plays a vital role in preserving the

archipelago. Witnessing their research and

conservation efforts firsthand is both

inspiring and motivating.



Galapagos Islands - Galapagos North, East & Southern Islands Cruise | Seaman Journey

Trip Code

ECSJ9C1

Departure

Selected Thursdays
Depart from San Cristobal Island: Punta Pitt &

Duration

9 Days

Today, you'll visit Punta Pitt, situated at the

eastern end of San Cristobal Island. It

features a beach approximately 90 meters

long and several natural viewpoints

overlooking an eroded hill of volcanic tuff. A

1,400-meter trail leads from Oliviana Beach

to the top of the hill, which displays various

lava formations. The strong winds on the

hill have sculpted the landscape into

fantastic and unforgettable scenery,

resembling something out of a science

fiction movie. Oliviana Beach boasts a

stunning olive-yellow color adorned with

bright crystals resulting from lava and shell

erosion. Here, sea lions bask in the sun

while observing the flight of frigate birds,

pelicans, herons, and seagulls. Pitt Islet is

one of the rare locations where you can

observe all three species of boobies (blue-

footed, red-footed, and masked) and both

species of frigate birds in the same vicinity.

Your next destination is Isla Lobos, a small,

flat islet. Named for the several sea lions

that inhabit it, their brown fur stands out

against the white sand as they frolic on the

beach. Isla Lobos is approximately 20

minutes by boat (10 kilometers) from Puerto

Baquerizo Moreno on San Cristobal Island.

Designated as a tourist diving site, Isla

Lobos offers two piers from which tourists

can explore the ocean floor accompanied by

sea lions. The protected channel in its

waters provides an excellent spot for

snorkeling. An 850-meter trail runs along

the island, connecting the two piers. The

estimated walk time is one hour, during

which you can observe coastal vegetation

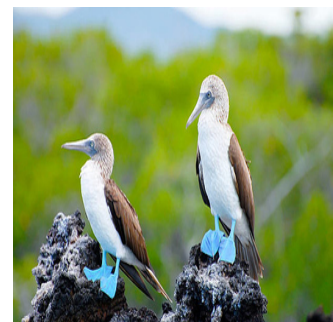
consisting of saltwater-tolerant plants. The

island is named after the two species of sea

lions that inhabit it, one related to the

California sea lions and the other, the fur

seals, originating from Antarctica.



Galapagos Islands - Galapagos North, East & Southern Islands Cruise | Seaman Journey

Trip Code

ECSJ9C1

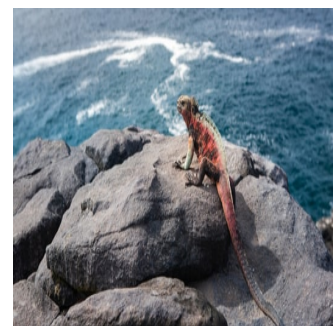
Departure

Selected Thursdays

Duration

9 Days

Today, you will explore Española Island, Galapagos Islands, Ecuador. Specimen Bay. Specimen Bay is situated on the northeastern coast of Hood Island, Gardner Bay boasts a fantastic beach perfect for relaxation, swimming, and kayaking. It's also an ideal spot for observing sea lions (*Zalophus wollebaki*), and if you're lucky, you may even catch sight of sharks in the crystal-clear ocean waters. At this location, you can observe three species of Darwin finches: a subspecies of the large-billed cactus finch (*Geospiza fuliginosa*), resembling the large-billed terrestrial finch; the small-beaked ground finch (*Geospiza fuliginosa*); and the singing finch (*Certhidea Olivacea*), another endemic subspecies. Both resident and migratory birds can be spotted in this area. Later in the day, you'll head to Suarez Point. This area is excellent for spotting blue-footed boobies, albatrosses, and Nazca boobies. Situated on the oceanfront, it is a beautiful site where the large waved albatrosses use the cliff as a launching pad. The famous attraction here is the magnificent blowhole, which spurts water high into the air, reaching heights of at least 50 to 75 meters. This site offers wonderful photography opportunities.



Galapagos Islands - Galapagos North, East & Southern Islands Cruise | Seaman Journey

Trip Code

ECSJ9C1

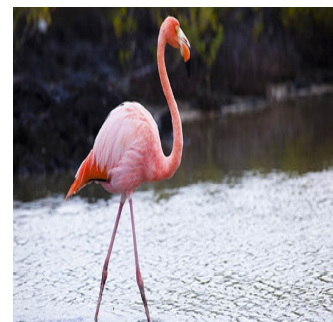
Departure

Selected Thursday 9
Depart from Cormoran Point, Champion Islet &

Post Office Bay

9 Days

Location
This morning, you'll head to Cormorant Point on Champion Islet. This site boasts perhaps the best flamingo lagoon in the Galapagos, one of the largest in the islands. Situated between two tuff lava cones, the area exudes a special atmosphere. Besides flamingos, you'll have the chance to observe various species of shorebirds, including common stilts, white-cheeked pintail ducks, and other migratory birds. Two distinct beaches await exploration: "The Green Beach," named for its high percentage of olivine crystals in the sand, and the "Flour Sand Beach," composed of coral. After an intriguing walk, the group will be taken to Champion Islet, an excellent spot for snorkeling and experiencing underwater wildlife. Keep an eye out for sea turtles, sea lions, and a plethora of fish thanks to the nearby coral reef. Later in the day, you'll visit Post Office Bay. Historically, this site housed a wooden barrel placed in the 18th century by the crew of a whaling ship. Used as a post office by mariners and tourists ever since, the tradition involves carrying letters or postcards to their destinations by hand. Additionally, this area served as the landing site for some of the first colonists. This afternoon is dedicated to relaxation, allowing visitors to unwind on the beach and soak in the beauty of the Galapagos.



Galapagos Islands - Galapagos North, East & Southern Islands Cruise | Seaman Journey

Trip Code

ECSJ9C1

Departure

Selected Thursdays
Departure Fausto Llerena Nurturing Centre &

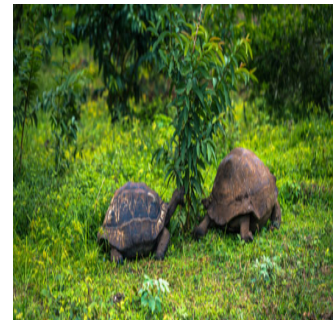
Duration

9 Days

Locations

In the morning, you'll explore the Fausto Llerena Breeding Centre. Situated within the Galapagos National Park, it's located on Charles Darwin Avenue, approximately 1 km from the Gus Angermeyer Tourist Pier.

Accessible after a scenic 40-minute walk, this attraction is an integral part of the Charles Darwin Foundation's network of visitor sites. The visit commences at the information booth of the Galapagos National Park Service (SPNG). Following the trail, you'll first arrive at the Van Straelen Interpretation Centre before reaching the breeding centre itself. From there, an elevated circular wooden path provides excellent vantage points for observing Lonesome George and the tortoises from Española Island. The path concludes at the tortoise exhibition corral. After the visit, you'll be transported to the Baltra airport in time for your flight back to the mainland.



Inclusions & Details

Accommodation Cabin on board a Catamaran Yacht

INCLUSIONS

Accommodation
All meals
Water coffee and tea
All excursions
English-Speaking Naturalist guide
Snorkelling equipment
Kayak equipment

Inclusions

EXCLUSIONS

Return airfares from mainland Ecuador
Galapagos National Park Entrance Fee (US\$200 per person from Aug 2024 - Subject to change)
Galapagos Transit Control Card (US\$20 per person - Subject to change)
Wet suit rental
Soft drink & alcoholic drinks
Personal expenses
Gratuities for crew/guides

Difficulty Rating

2 (light adventure)

Galapagos Islands - Galapagos North, East & Southern Islands Cruise | Seaman Journey

Trip Code

ECSJ9C1

Departure

Selected Thursdays

Single Surcharge

Duration

9 Days

Locations

Galapagos Islands, Ecuador

Notes

A single supplement surcharge applies and is subject to availability. Please contact us for more information.

All entrance fees are subject to change without prior notice.

Please note kayak activities are subject to weather conditions.

Prices are based on per person, twin share* (unless otherwise stated)

Prices are correct at time of publishing but are subject to change at any time

* Itinerary is subject to change depending on weather conditions and government regulations.

Price Dependent upon Seasonality, fuel surcharges, currency fluctuations and availability at time of booking.

Sustainability