

## Galapagos Islands - Galapagos Wildlife Discovery 5 days | Tribute

Trip Code  
ECATTWD  
Departure



### Introduction

Set sail on a five-day wildlife discovery cruise on our Central and North Galapagos Safari. Begin at the immaculate Lobos Islet. Explore interactions with Santa Fe's diverse fauna, which includes endemic species. Discover the hidden gems of Genovesa, known for Prince Philip's Steps and Darwin Bay. Explore Chinese Hat and Rabida to find wildlife and distinctive sceneries.

Visit the Charles Darwin Centre in Santa Cruz to round off your journey, where science and conservation come together.

You have a good possibility of seeing Waved albatross, Blue and Red-footed boobies, American Frigate birds, Galapagos giant tortoises, Galapagos sea lions, and land iguanas on this route.

\* Itinerary is subject to change depending on weather conditions and government regulations.

**PLEASE NOTE: Pricing is subject to change and availability at the time of booking. [Contact us](#) for more information.**

### Itinerary

## Galapagos Islands - Galapagos Wildlife Discovery 5 days | Tribute

Trip Code

ECATTWD

Departure

Selected Sundays

Direct Arrival to Lobos Islet (San Cristobal)

Duration

5 Days

Upon your arrival at San Cristobal, a warm

welcome awaits you. A friendly guide will be

waiting to greet you and assist with

collecting your luggage. After a short bus

ride to the harbor, you'll board the Tribute

cruise. Once settled in your cabins, a

delicious lunch will be served. In the

afternoon, the cruise will take you to Lobos

Islet, home to a lively colony of Galapagos

sea lions. Approach nurturing females

within a few meters, and during the

breeding season, witness territorial males

fiercely defending and mating with their

harem. The islet is also a breeding ground

for two iconic species - male blue-footed

boobies and great frigate birds. Watch as

they engage in captivating displays,

showcasing their vibrant blue feet and

inflating their balloon-sized scarlet pouches

in an attempt to impress both females and

curious tourists alike.



## Galapagos Islands - Galapagos Wildlife Discovery 5 days | Tribute

Trip Code

ECATTWD

Departure

Selected Sundays  
Departure Santa Fe Island & Black Turtle Cove

Duration

5 Days

Locations

Galapagos Islands, Ecuador

Approach you. Galapagos hawks, perched at

outlooks, are also within close reach,

keeping an eye out for marine iguanas or

lava lizards. Following a trail through a

cactus forest, witness giant opuntia prickly

pears, growing larger here than on any

other island, revealing a captivating

evolutionary tale. Later, at Barrington Bay,

enjoy a refreshing swim amidst a vibrant

marine community, including sea lions, blue

chin parrotfish, surgeonfish, stingrays,

green turtles, and whitetip reef sharks. In

the afternoon, disembark the cruise to

explore Black Turtle Cove from a dinghy.

This area showcases the transformative

impact of mangroves on the marine

environment, creating a unique habitat.

Three mangrove species extend from the

shore into the lagoon, reaching nearly a

mile inland. As you drift through quiet

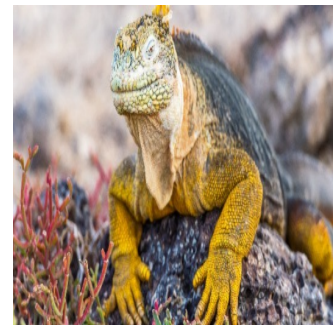
waters, spot spotted eagle rays in a

diamond formation, white-tipped reef sharks

gliding beneath the boat, and Pacific green

turtles surfacing for air—a serene and

captivating experience.



## Galapagos Islands - Galapagos Wildlife Discovery 5 days | Tribute

Trip Code

ECATTWD

Departure

Selected Sundays

Duration

5 Days

This morning, your destination is Darwin Bay on Genovesa Island. Being one of the Galapagos Islands, Ecuador

Genovesa justifies the longer navigation of the previous night. This compact site, nestled in the heart of a flooded crater, offers a miniature representation of the extremely diverse coastal ecosystems of the Galapagos, almost overwhelming for a single day of exploration. Along the surf, Whimbrels and wandering tattlers actively forage, sharing the space with peacefully resting Galapagos sea lions. Impressive frigatebirds and red-footed boobies find their nesting grounds in the mangroves, where you'll also encounter vocalists like the yellow warbler, Darwin's finches, and the Galapagos mockingbird. Notably, two subpopulations of the same large cactus finch species showcase distinct singing patterns. Genovesa, also known historically as "Tower," exudes a regal ambiance.

Follow in the footsteps of Prince Philip, a devoted Galapagos lover, and explore this favored birding spot with the largest breeding colonies of red-footed and Nazca boobies. Keep an eye out for the remarkable short-eared owl, known for its unique hunting technique on foot.



## Galapagos Islands - Galapagos Wildlife Discovery 5 days | Tribute

Trip Code

ECATTWD

Departure

Selected Sundays  
Day 4: Chinese Hat & Rabida Island

Duration

5 Days  
Approaching Chinese Hat from the north,

Location  
The origin of its name becomes evident.

Galapagos Islands, Ecuador

Arriving just in time, witness the colonization of this young, barren islet by pioneer species sprouting from holes in the lava. Galapagos sea lions, numerous marine iguanas, eagles, and mockingbirds contribute to the fertile soil. A highly recommended snorkeling experience awaits, as this spot is home to a colony of critically endangered Galapagos Penguins, affected by the impacts of climate change. While swimming, these penguins may curiously approach your mask, accompanied by sea lions and elusive Pacific green turtles. In the afternoon, embark on a 'wet landing' on the extraordinary red beach of Rabida Island. The rocks and sand of this beach exhibit an intense rusty color due to oxidized iron particles. Adjacent to the beach lies a shallow green lagoon, a rare oasis on this arid island that attracts various aquatic birds, including pintails and sometimes American flamingos. Within the evergreen foliage of surrounding mangrove bushes, numerous species of songbirds hide and breed. A major highlight is the breeding colony of brown pelicans, the only ones globally known for their plunge-diving behavior. After your exploration, inflatable dinghies will pick you up to prepare for a rewarding snorkeling experience.



## Galapagos Islands - Galapagos Wildlife Discovery 5 days | Tribute

Trip Code

ECATTWD

Departure

Selected Sundays

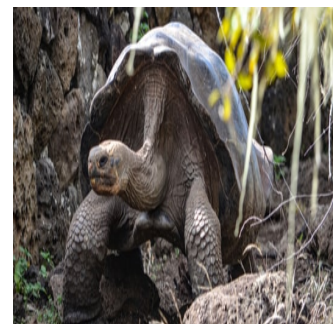
Arrive Charles Darwin Research Station &

Disembarkation

5 Days

Locations

The dinghies will ferry you to the tourist Galapagos Islands - Ecuador  
from Puerto Ayora on Santa Cruz Island, where you'll then be transported to the Charles Darwin Research Station. Named in honor of the British naturalist who developed the Theory of Evolution after his 1835 visit to these islands, the station focuses on the conservation and restoration of Galapagos ecosystems, as well as the sustainable development of local communities. Within the station, there's an interpretation center highlighting the National Park and its Marine Reserve. The most memorable segment of your visit will likely be the successful breeding center and enclosures featuring Galapagos giant tortoises. Following this insightful visit, you will disembark and be transferred to Baltra airport.



Inclusions & Details

Accommodation

Cabin on board a Yacht

## Galapagos Islands - Galapagos Wildlife Discovery 5 days | Tribute

Trip Code

ECATTWD


Departure

Selected Sundays

Duration

5 Days

Locations

Galapagos Islands, Ecuador 

### INCLUSIONS

- Lodging on board in a suite with private facilities.
- All meals starting with lunch on the first day and finishing with breakfast on the final day.
- Collection of local house wines, beers, and soft drinks.
- All excursions as mentioned in the itinerary with one English speaking naturalist guide per 8 guests.
- Use of kayaks and paddleboards (when applicable).
- Snorkelling gear (masks, flippers and snorkel) & wetsuits.
- Wi-Fi service (please note service might be intermittent in remote places).
- Complimentary access to VIP Lounge at Baltra airport.
- Airport-yacht-airport transfers (for all guests arriving at the scheduled meeting point, date and time).

Inclusions

### EXCLUSIONS

- Roundtrip flight to Galapagos from mainland Ecuador.
- Galapagos National Park entrance fee (USD\$200 pp from August 2024, subject to change).
- Transit Control Card (USD\$20 pp, subject to change).
- Other alcoholic beverages (drinking packages available at a surcharge).
- Gratuities.
- Travel insurance (mandatory) and other items of a personal nature.
- International airfares.
- Any extra food & drink not mentioned in the itinerary.
- Visas if applicable.

Difficulty Rating

2 (light adventure)

Single Surcharge

A single supplement surcharge applies and is subject to availability. Please contact us for more information.

All entrance fees are subject to change without prior notice.

Please note water activities are subject to weather conditions.

Notes

Prices are based on per person, twin share\* (unless otherwise stated)

Prices are correct at time of publishing but are subject to change at any time

\* Itinerary is subject to change depending on weather conditions and government regulations.

Price Dependent upon Seasonality, fuel surcharges, currency fluctuations and availability at time of booking.

Sustainability