

Natural Selection Journey 7

Trip Code
GAMTISE
Departure



Introduction

As you travel around the archipelago, you will come across a range of islands and species. Española Island is home to a variety of animals, including giant tortoises, booby species, frigatebirds, and flamingos. You will travel to Post Office Bay and Cormorant Point in Floreana. Additionally, you will investigate mangroves in southern Fernandina and the lava structures at Punta Moreno. Visits to Eden Islet and North Seymour, where you may see a variety of species found in the Galapagos Islands, will round off the excursion.

* Itinerary is subject to change depending on weather conditions and government regulations.

PLEASE NOTE: Pricing is subject to change and availability at the time of booking. [Contact us](#) for more information.

Itinerary

Natural Selection Journey 7

Trip Code

GAMTISE

Departure

Select: Friday to the Galapagos Islands

Duration

7 Days Airport and Santa Cruz Island We

arrive at Baltra Island in the morning and

Galapagos Islands, Ecuador

board the Isabela II at the nearby dock.

Then, we have a briefing, a boat drill, and a

delicious lunch on board. Las Bachas (Santa

Cruz Island) At Las Bachas on Santa Cruz

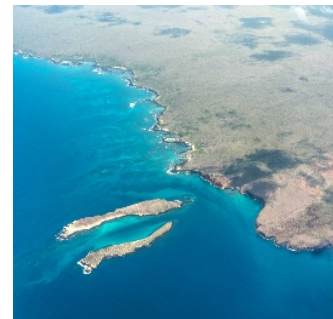
Island, enjoy the stunning white beach,

birdwatching, and a refreshing swim before

returning to the ship. End the day with a

cocktail, expedition briefing, and a delicious

dinner.



DAY 2: San Cristobal Island

Punta Pitt (San Cristobal) Start your day at

the eastern tip of San Cristobal Island. It's

the only place in the Galapagos where all

three species of boobies coexist with both

frigatebird species and a colony of bachelor

sea lions. If the weather is good, you can

swim, kayak, snorkel, or take a panga ride

from the beach. Cerro Colorado (San

Cristobal Island) Disembark at Puerto

Baquerizo Moreno and visit the breeding

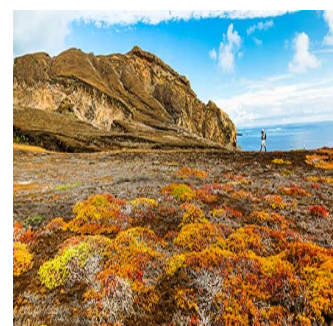
centre for critically endangered giant

tortoises at Cerro Colorado. Watch for

diverse bird species and the endemic San

Cristobal lava lizard in this enchanting

setting.



Natural Selection Journey 7

Trip Code

GAMTISE

Departure

Day 3: Española Island

Duration

7 Days
Gardner Bay (Española Island) In the morning, we'll walk on the pristine white coral beach of Gardner Bay. You can observe playful sea lions, charming Española mockingbirds, and finches. Enjoy fantastic snorkeling opportunities and optional kayaking, a dinghy ride, or a glass-bottom boat excursion. Punta Suarez (Española Island) After a satisfying lunch, the afternoon expedition at Punta Suarez leads along an exhilarating trail through lava and boulder fields. Marvel at unique seabird colonies and vibrant marine iguanas, adding to the wonder of your visit. It's sure to be memorable.



DAY 4: Floreana Island

Cormorant Point (Floreana Island) Explore the uniquely green-tinged olivine-crystal beach of Cormorant Point in the morning and spot American flamingos at a brackish water lagoon. On the opposite side of the island, visit a white-sand beach famous for sea turtle nesting at night. At Champion Islet, enjoy snorkeling, a panga ride, or a glass-bottom boat trip and see the rare Charles mockingbird. Post Office Bay & Baroness Cove (Floreana Island) After lunch, we'll visit Post Office Bay to see the historic barrel that has served as a post office for over two centuries in the archipelago. This site is significant as it's where Darwin's voyage aboard the Beagle made a stop and where he gathered observations that influenced his evolutionary theories. We'll end the visit with a snorkeling session off the beach.



Natural Selection Journey 7

Trip Code

GAMTISE

Departure

Day 5: Isabela Island

Duration

7 Days

Locations

Galapagos Islands, Ecuador

Species

Start by strolling through the

mangroves to spot sea turtles. Then, explore

the landscape dominated by the majestic

volcanoes of southern Isabela Island. The

rugged trail leads inland, offering views of

lava formations and wildlife, including

Galapagos penguins, cormorants, pelicans,

herons, sea lions, marine iguanas, and

crabs. Take advantage of the inland

lagoons, home to ducks, stilts, flamingos,

hawks, and mockingbirds. Finish with a

glass-bottom boat ride or snorkeling. Punta

Mangle (Fernandina Island) In the

afternoon, we will journey to Fernandina

Island and explore the coastline on pangas.

We will see Galapagos penguins, flightless

cormorants, rays, sea turtles, dolphins, and

whales in the nutrient-rich waters. Conclude

with a glass-bottom boat ride or deep-water

snorkeling, depending on sea conditions.



DAY 6: Eden Islet & North Seymour Island

Eden Islet Embark on a scenic panga ride to

Eden Islet off the coast of Santa

Cruz—Marvel at blue-footed boobies, reef

sharks, and frigates in their natural habitat.

Snorkel and, weather permitting, enjoy a

glass-bottom boat ride to witness the

stunning volcanic surroundings. North

Seymour Island North Seymour Island is

one of the most remarkable visitor sites in

the archipelago, boasting diverse habitats,

ecosystems, and iconic species. Enjoy a

leisurely walk along the coast and witness

nesting frigatebirds, land iguanas, and

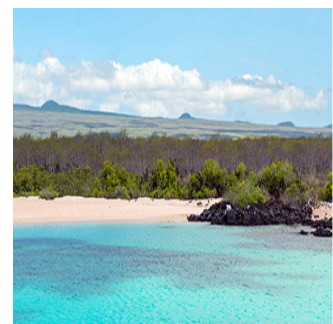
colonies of sea lions. Explore the coastal

wonders by dinghy, spot fur seals, and

partake in deep-water snorkeling. Conclude

the day with an evening briefing, cocktail,

and dinner.



Natural Selection Journey 7

Trip Code

GAMTISE

Departure

Select Fridays
Direct Fly Galapagos Island to Mainland

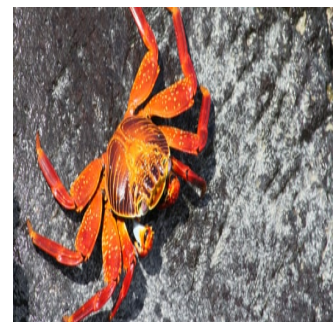
Duration

7 Days
Arriving at Baltra Island, we'll head to the
location for our return flight to the mainland.

Galapagos Islands, Ecuador

Thanks for joining us on this remarkable

expedition through the Galapagos Islands!



Inclusions & Details

Accommodation

Cabin on board ship

INCLUSIONS

Accommodation in double cabin

Transfers in the Galapagos and airport assistance

All meals during the cruise

Water coffee and tea & soft drink

All excursions as per the itinerary*

English-Speaking Naturalist guide

Snorkelling equipment

Wet suit rental

Kayak & Paddle board equipment

Inclusions

EXCLUSIONS

Return airfares from mainland Ecuador

Galapagos National Park Entrance Fee (US\$200 per person from Aug 2024 - Subject to change)

Galapagos Transit Control Card (US\$20 per person - Subject to change)

Fuel Surcharges

Alcoholic drinks

Personal expenses

Gratuities for crew/guides

Services not specified

Difficulty Rating

2 (light adventure)

Single Surcharge

A single supplement surcharge applies and is subject to availability. Please contact us for more information.

All entrance fees are subject to change without prior notice.

Please note kayak activities are subject to weather conditions.

Prices are based on per person, twin share* (unless otherwise stated)

Notes

Prices are correct at time of publishing but are subject to change at any time

* Itinerary is subject to change depending on weather conditions and government regulations.

Price Dependent upon Seasonality, fuel surcharges, currency fluctuations and availability at time of booking.

Sustainability