



Introduction

The recently refurbished M/Y Calipso is a unique way to explore the Galapagos that combines comfort and expedition. This 4-day cruise will take you through the beautiful and pristine waters of Floreana island, the Santa Cruz islands and San Cristobal. Enjoy amazing postcard views, dive into crystal blue waters and catch a glimpse of some of the most unique wildlife in all the world.

Check out the other itineraries onboard Calipso: [8 Day Cruise](#), [5 Day Western Islands Cruise](#)

Itinerary

Ecuador - Southern Islands Cruise | Calipso

Trip Code

ECGGC4D

Departure

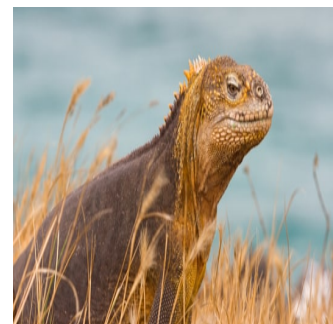
Selected Mondays, Arrival Baltra & South

Plaza Island

4 Days

Locations: Flight from Quito or Guayaquil to
Ecuador, Galapagos Islands, South America

Balra, Galapagos Islands. You will arrive at
Baltra Island in the morning. After passing
through immigration and baggage claim,
you will be met by a Calipso staff member
and transferred to the yacht. You will be
shown to your cabin where you will have
some time to settle in before lunch and a
welcome briefing. In the afternoon, visit
South Plaza Island. This small island with
steep cliffs was formed by rising lava and is
now covered by Opuntia cacti. It is also
home to one of the largest sea lion colonies
as well as colourful yellow and red land
iguanas. The most characteristic plant is the
Sesuvium. During the rainy season its
colour is a greenish to yellowish tone and in
the dry season (end of June through
January) a bright red.



Ecuador - Southern Islands Cruise | Calipso

Trip Code

ECGGC4D

Departure

Selected Mondays

Duration

4 Days

You will land on a beach and head to a spot

where 18th century whalers placed a

wooden barrel used as an unofficial mail

box, Post Office Bay. The custom continues

to this day with Galapagos visitors. So, don't

forget your postcards, and don't be

surprised if the post card arrives to its

destination before you even get home!

Baroness Viewing Point is a fantastic place

to absorb the environment of the Galapagos.

Once inhabited by an indulgent baroness

and her three lovers, the history of this

island is intriguing. The legends about this

baroness are associated with a fascinating

murder mystery. There are easy trails in

this area for exploring the flora and fauna of

Floreana. In the afternoon, enjoy the sights

of Cormorant Point, a point that hosts a

large flamingo lagoon. It is here that other

birds such as common stilts and white-

cheeked pintails can also be see. The

beaches on this island are distinct: The

Green Beach is named so due to its green

colour, which comes from a high percentage

of olivine crystals in the sand, and the Four

Sand Beach is composed of white coral.



Ecuador - Southern Islands Cruise | Calipso

Trip Code

ECGGC4D

Departure

Selected Mondays, Santa Fe and Santa

Duration

4 Days

Santa Fe Island (Barrington) is home to the
Ecuador Galapagos Islands, South America

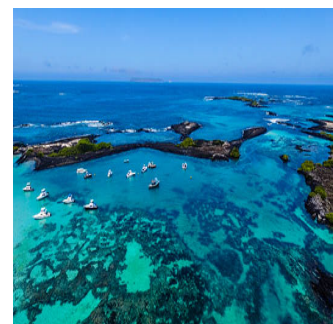
Small picturesque bay and anchorage on the island's northeast coast. The bay has two visitor trails: one leading to a scenic viewpoint atop a cliff, and the other spanning from a small beach to a tall prickly cactus forest. Later that day, you will visit "Fausto Llerena", Giant Tortoises Breeding Center in Puerto Ayora, Santa Cruz Island, where giant tortoises are bred in captivity; this is home to tortoises ranging from 3-inches (new hatchlings) to 4-foot long adults. Subspecies of the giant tortoises interact with one another, and many of the older tortoises are accustomed to humans stretching out their heads for a photo opportunity. The babies are kept until they are about four years-old and strong enough to survive on their own.



DAY 4: San Cristobal Island & Departure

You will visit Gianni Arismendy Interpretation center, part of an environmental project. The tour of this center will explore the natural history of the islands including human interaction and conservation efforts. The Museum of Natural History explains the volcanic origin of the archipelago, ocean currents, climate, and the arrival of endemic species. The Human History exhibit chronologically describes significant events such as discovery and colonization of the islands.

After this final visit, you will be transferred to the San Cristobal airport in time for your flight back to the mainland.



Inclusions & Details

Accommodation Cabin on board ship

Ecuador - Southern Islands Cruise | Calipso

Trip Code
ECGGC4D
Departure
Selected Mondays
Duration
4 Days
Locations
Ecuador, Galapagos Islands, South America

INCLUSIONS

All meals onboard the ship
Transfers in the islands
Twice daily excursions
Bilingual National Park Guide on all excursions
Use of snorkelling equipment/wetsuit
Use of underwater camera
Free Airport Assistance*
Hotel night in Quito or Guayaquil (the day before the cruise)*
1 Free transfer to Galapagos Flights*
*Applies when purchasing airfare through ship operator

Inclusions

EXCLUSIONS

Roundtrip airfare to/from Galapagos
Alcoholic and other non included drinks
Galapagos National Park Entrance Fee (US\$200 per person from Aug 2024 - Subject to change)
Galapagos Transit Control Card (USD\$20 per person - Subject to change)
Travel/Medical insurance
Gratuities
Personal Expenses
Visas and other related expenses

Difficulty Rating

2 (Light adventure)

Single Surcharge

A single supplement surcharge applies and is subject to availability. Please contact us for more information.

Notes

All entrance fees are subject to change without prior notice.
Itinerary is subject to change depending on weather conditions and government regulations.

Price Dependent upon Seasonality, fuel surcharges, currency fluctuations and availability at time of booking.

Sustainability

Chimu Adventures undertakes a number of sustainability measures within its operations including:

- 1) Only using local guides and office staff to both maximise local employment opportunities and minimise carbon footprints. Local guides also ensure you benefit from the intimate knowledge, passion and culture of the country you're visiting.
- 2) Where possible, using locally owned and operated boutique hotels to maximise the return to the local community.
- 3) Chimu's "Pass it on" programme has provided funding to hundreds of local community projects in Latin America. Our aim is to empower local communities, helping them to develop their own infrastructure for the future. Since 2006, we have been working with Kiva (a well-known Non-Governmental Organisation), providing hundreds of loans to local businesses all over South America.
- 4) In our pre tour information we provide a range of tips and advice on how to minimise your impact on both local environments and communities.
- 5) Chimu Adventures' offices also take a number of sustainability measures including carbon offsets for company vehicles and most staff travel. Chimu Adventure's internal processes are also structured to create a paperless office

Ecuador - Southern Islands Cruise | Calipso

Trip Code

ECGGC4D

Departure

Selected Mondays

Duration

4 Days

Locations

Ecuador, Galapagos Islands, South America



and to reduce waste. There are also internal programmes to help staff minimise their carbon footprint such as our staff bike purchase assistance plan which encourages office staff to commute to work via bicycle. Currently almost half of our office based staff commute to work via bicycle.